

Base for sixfold, potential-free push button, 24 V N.O. with blue LED, screw fixing

170-60161

4 year warranty

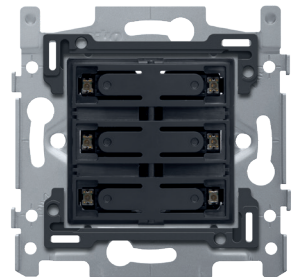
Mechanism for sixfold potential-free push button, 24 V N.O. with claw fixing. This mechanism is equipped with a blue LED. A finishing set in the colour of your choice must be ordered separately. This article is protected by at least one patent (application). For more info on patents, see www.niko.eu/innovation.

Faster and easier installation:

- all connections terminals are located at the top of the base:
 - to ensure all wires can be cut and stripped at the same length
 - to guarantee more space under the mechanism, so you can easily fold the wires and place the mechanism in the flush-mounting box without the wiring pushing it back up.

Niko quality:

- metal base is held firmly in place, even on uneven walls, doesn't break and is not subject to stress cracking (small ruptures)



Technical data

Base for sixfold, potential-free push button, 24 V N.O. with blue LED, screw fixing.

- Number of control buttons: The base and the two LED lighting strips of the potential-free push button are made of polycarbonate. In addition to the 6 control buttons, the mechanism is equipped in the middle on the front with snap hooks which hold the keys in place. In addition, the mechanism is also equipped with two LED lighting strips. When the LEDs are connected, the 6 standing studs are illuminated. The LEDs can be connected as indicators or as feedback.
- Protection degree: IP41 for the combination of a mechanism, central plate and faceplate
- Impact resistance: The combination of a mechanism, a central plate and a faceplate has an impact resistance of IK06
- Connector block: On its back side, the mechanism is equipped with connector blocks: one for the connection of the fourfold, potential-free push button and one for the connection of the LEDs.
- Flush-mounting frame
 - 1 mm-thick metal
 - galvanized on all sides after cutting, even on the cut edges
 - with 4 grooves with screw hole of 7 mm
 - with 4 screw holes (indicated by a screw symbol) with a diameter of 3 mm for mounting on panels
- Fixing method
 - with screws for simple fixing in a flush-mounting box with grip surfaces
- Centre-to-centre distance
 - Simple and quick assembly of one or more mechanisms by the indication (chalk line, laser, etc.) of the centre of the flush-mounting frame
 - vertical coupling centre-to-centre distance 60 mm by sliding several bases into each other; they lock

niko

170-60161 - 28-05-2025

themselves automatically

- vertical coupling centre-to-centre distance 71 mm using pre-formed lips at the bottom, by folding the lips downwards over a length of 1 mm, the bases support each other and the centre-to-centre distance is guaranteed.
- horizontal connection of multiple bases is quick and perfect thanks to the folded-up dovetails on the left and right sides
- extra robustness due to the folded-up edges on the outside of the base and the continuation into the inside of the base
- End border: The flush-mounting frame is equipped, both on the top and the bottom, with a dark grey, plastic end border. This border is made of PC+ASA and is joined to the flush-mounting frame using a melting process. The corners of the two end borders are equipped with rectangular openings (7.9 x 1.5 mm) each containing a multi-positional snap hook. Thanks to the snap hooks, the 4 rectangular openings ensure that the faceplate can always be attached flat to the wall, even in cases of untidy plasterwork. This works in two directions: If the flush-mounting box sticks out of the plasterwork, the multi-positional snap hooks can compensate for a 1 to 1.2 mm margin; if the flush-mounting box is sunk too deeply in the plasterwork, the snap hooks can compensate for up to a 1.8 mm margin. The end borders also have 4 round openings that ensure the correct positioning of the faceplate in relation to the central plate.
- Wire connection
 - each connector block is equipped with cage clamps with permanent screws with a slotted screwhead (slot 0.6 x 3.5 mm)
 - every screw is provided with a screwdriver slot that prevents the screwdriver from sliding off the screwhead.
- Wire capacity
 - the connection terminals have a terminal capacity of min. 0.5 mm and max. 0.8 mm.
- Ambient temperature: -5 – +40 °C
- Dimensions (HxWxD): 71 x 73 mm
- Marking: CE

