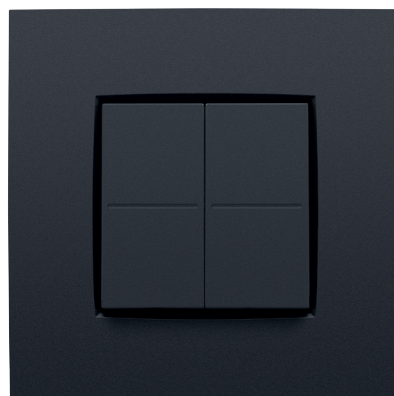


# Niko dimmer switch, EnOcean®

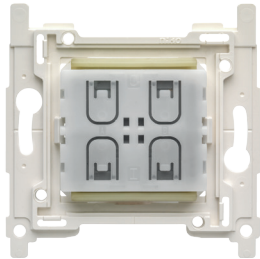
With this wireless and battery-free dimmer switch in Niko design, you can remotely operate EnOcean® certified 868 MHz wireless receivers. Examples are Niko presence detectors with an EnOcean® interface (350-41680, 350-41780, 350-41781). No wall breaking or cable installation is needed. For best performance, follow the installation and radio planning guidelines. The pairing procedure with a wireless receiver determines the function of each button. Up to four buttons can be configured. The dimmer switch can be mounted into a European flush-mounting box, screwed onto a wall (screws not included) or glued to a flat surface with double-sided adhesive tape (included). The central plate and the faceplate must be ordered separately. The dimmer switch combines with any Niko Pure, Niko Intense and Niko Original faceplate in the colour of your choice.



## 360-11001

4 year  
warranty

### Niko dimmer switch, EnOcean®



With this wireless and battery-free dimmer switch in Niko design, you can remotely operate EnOcean® certified 868 MHz wireless receivers. Examples are Niko presence detectors with an EnOcean® interface (350-41780, 350-41781). No wall breaking or cable installation is needed. For best performance, follow the installation and radio planning guidelines. The pairing procedure with a wireless receiver determines the function of each button. Up to four buttons can be configured. The dimmer switch can be mounted into a European flush-mounting box, screwed onto a wall (screws not included) or glued to a flat surface with double-sided adhesive tape (included). The central plate and the faceplate must be ordered separately. The dimmer switch combines with any Niko Pure, Niko Intense and Niko Original faceplate in the colour of your choice.

Niko dimmer switch, EnOcean®. The base of the 4-fold potential-free push button is made of polycarbonate. In addition to the 4 push buttons (upper left and right and lower left and right), the mechanism is equipped in the middle on the front with snap hooks which hold the two keys and a finishing plate (with or without text field) in place. • dimensions (HxWxD): 83 x 83 x 15 mm

- power supply: integrated kinetic energy harvester
- RF protocol: EnOcean®
- maximum RF power: 5 dBm / 3,1 mW
- configuration interface: Special Button Combinations (SBC) NFC forum type 2 tag
- mounting height: 110 cm
- temperature (storage / operating): -25 °C - +65 °C
- maximum range (indoor from switch to receiver): up to 30 m
- operating frequency: 868,3 MHz
- antenna: integrated antenna
- weight: 25 g
- protection degree: IP20
- marked: CE