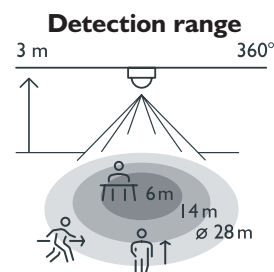


Presence detector, 360°, DALI standard, 28 m, master, for flush-mounting box

350-750321

This presence detector is a standard master detector for DALI lighting control in up to 3 daylight zones. The detector is especially designed for mounting in a standard flush-mounting box (60 or 79 mm diagonal screw distance). The lighting zones are defined during commissioning, using the Niko detector tool app and 2-way Bluetooth® communication between a smartphone or tablet and the detector.

- Daylight control in 1-3 daylight zones
- Easy mounting in a standard flush-mounting box (60 or 79 mm diagonal screw distance)
- Quick cabling using screwless and easily accessible plug-in terminals
- User-friendly app for commissioning (iOS/Android)
- 2-way Bluetooth® communication ensures quick commissioning and live feedback in the app
- Supports DALI broadcast (default) and DALI addressable
- Supports one zone auto assignment in DALI addressable mode
- Fitted with three PIR sensors, each covering 120°
- Pre-configured functions:
 - auto configuration when replacing one DALI ballast/DALI device
 - orientation light
 - adjustable power-on level when daylight control is disabled
 - adjustable PIR sensitivity (4 levels)
 - tunable white third-party integration
 - event log keeps track of recent changes
- DALI lighting control can be overridden with a 230 V push button
- Suitable for controlling up to 64 DALI devices



 **Bluetooth®**



DALI-2



master



360°



2 – 3.5 m



28 m from
a height of
3 m



flush-mounting box

			
2 m	4 m	10 m	20 m
2,5 m	5 m	12 m	24 m
3 m	6 m	14 m	28 m
3,5 m	7 m	16 m	32 m

Technical data

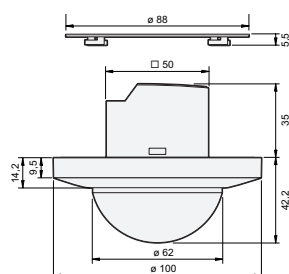
4 year
warranty

Article number	350-750321
Configuration	master
Input voltage	230 Vac \pm 10 %, 50 Hz
Maximum power consumption	0.4 W
Maximum current consumption	9 ms
Maximum current consumption wireless link active	12 mA
Maximum voltage on the DALI bus	13.5 V
Maximum guaranteed current on the DALI bus	100 mA
Maximum startup time	450 ms
Light intensity range	20 lux – 2000 lux, ∞
Switch-off delay	pulse, 15 s – 2 h, ∞
Detection angle	360°
Detection range (PIR)	up to 28 m in diameter from a height of 3 m
Ambient temperature	-25 – 50 °C
Mounting method	flush-mounting box
Mounting height	2 – 3.5 m
Colour	white (RAL 9010)
Dimensions visible (HxWxD)	100 x 100 x 42.2 mm
Dimensions (HxWxD)	100 x 100 x 77.2 mm
Wire capacity	2.5 mm ²
Maximum range Bluetooth®	25 m
Maximum radio frequency power	-5 dBm
Minimum distance between Bluetooth® devices	1.2 m
Protection degree	IP20
Impact resistance	IK04
Detector settings	Niko detector tool app and 2-way Bluetooth® communication
Marking	CE

Accessories

350-991992	Deco ring for flush-mounted 28 m detectors, black (RAL9005)
350-750021	Presence detector, 360°, DALI, 28 m, slave, for flush-mounting box

Dimensions



Wiring diagram

