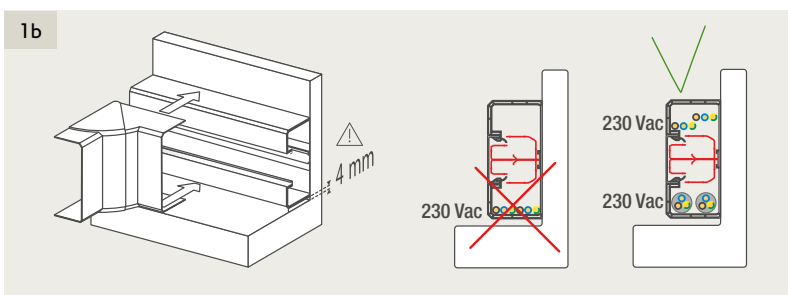
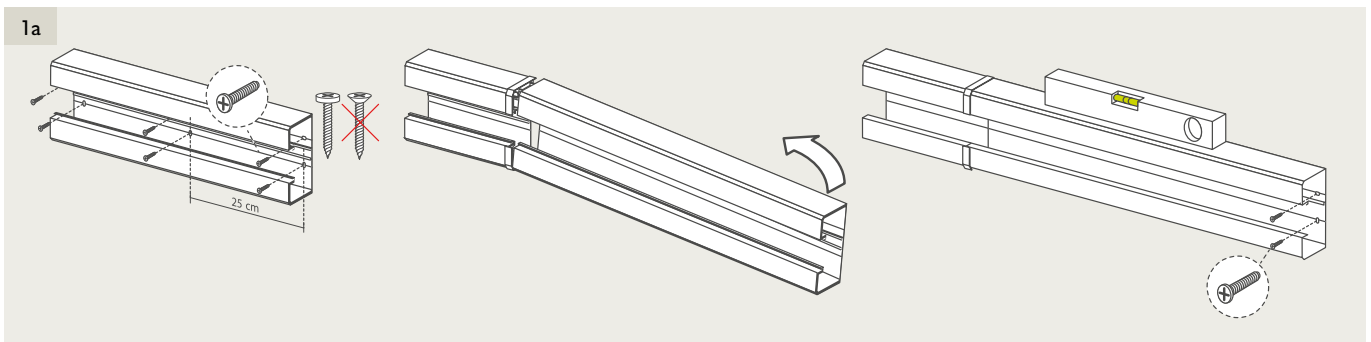
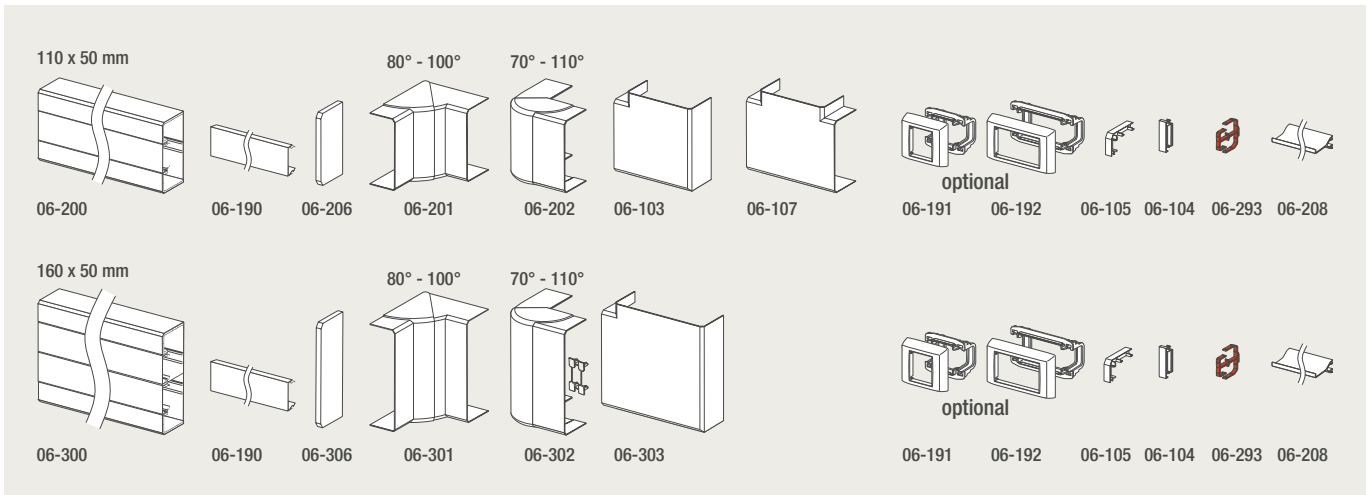
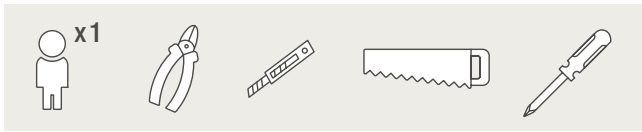
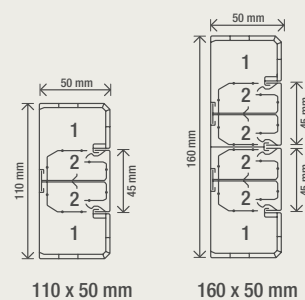
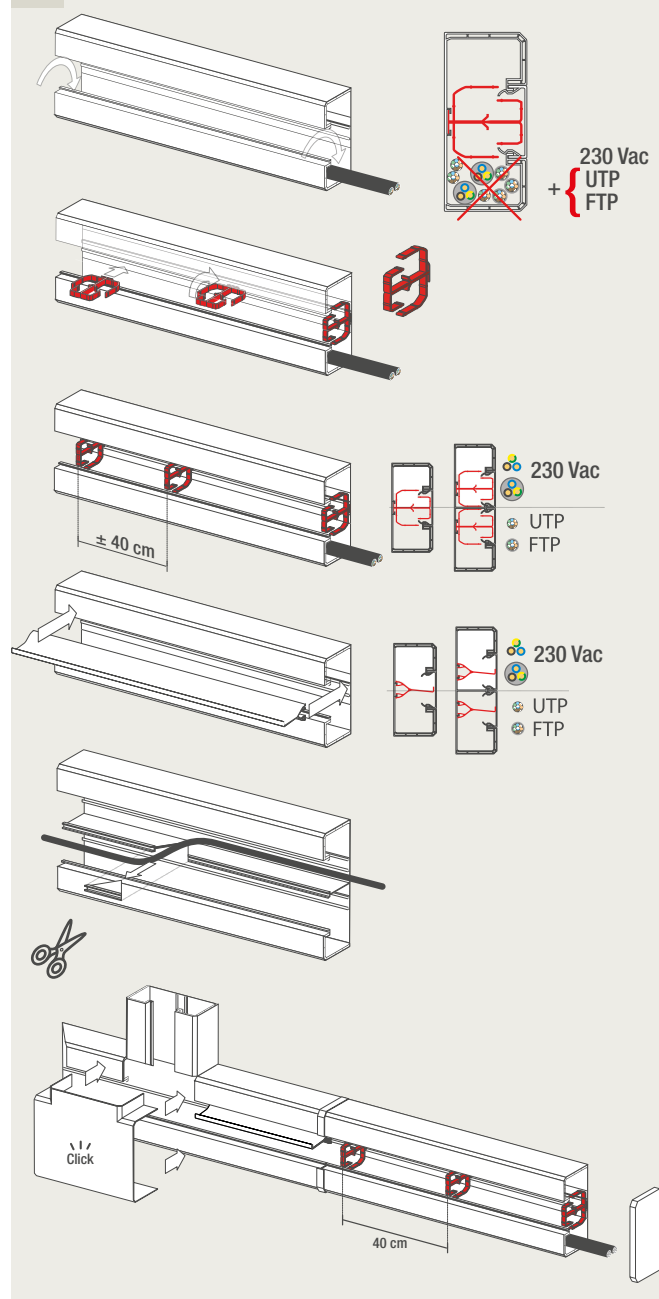


## 4.08 Installatiekanalen

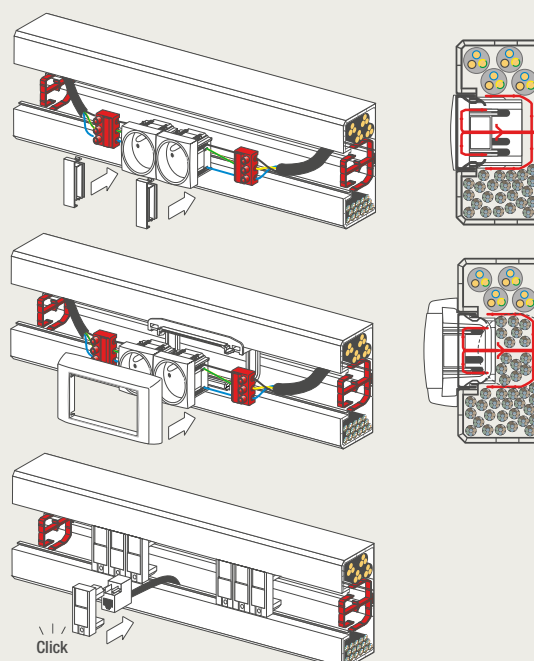


2

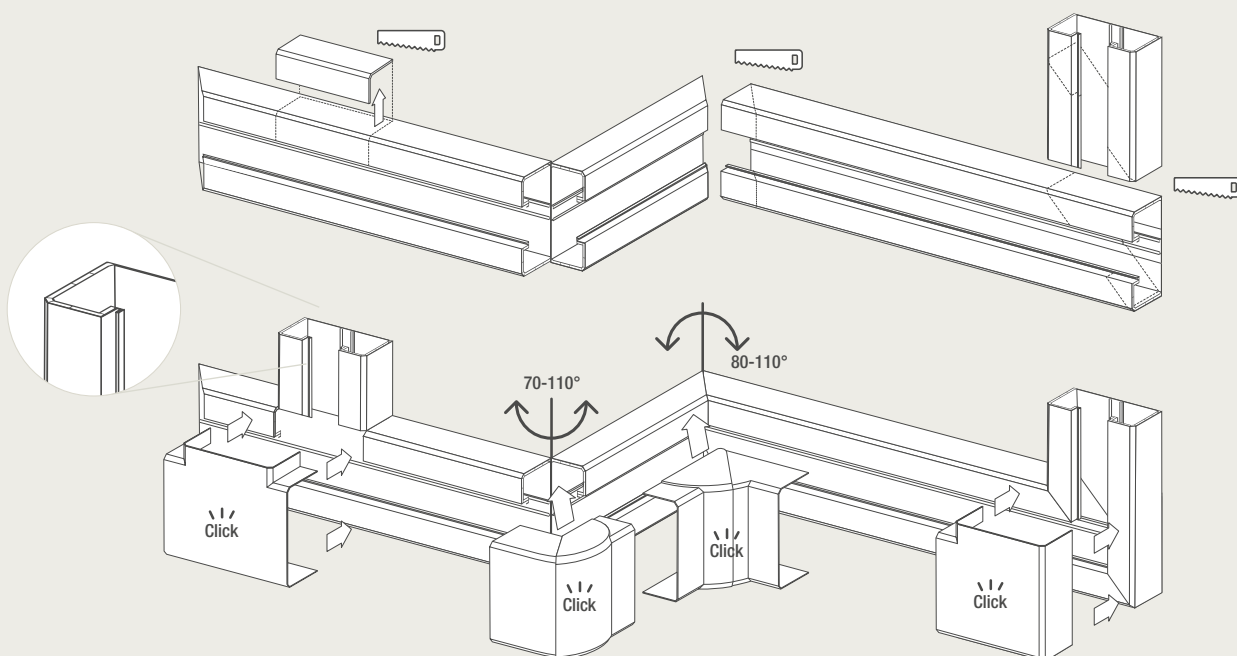


230 Vac 3 x 2,5 mm <sup>2</sup>	ZONE 1	7	7
	ZONE 2	4	4
UTP ø 6 mm	ZONE 1	21	24
	ZONE 2	12	14
FTP ø 8 mm	ZONE 1	15	16
	ZONE 2	8	7
ZONE 1		1250 mm <sup>2</sup>	1250 mm <sup>2</sup>
ZONE 2		662 mm <sup>2</sup>	662 mm <sup>2</sup>

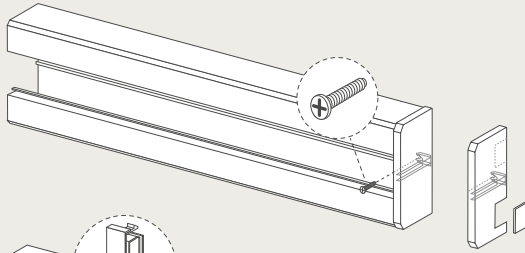
3



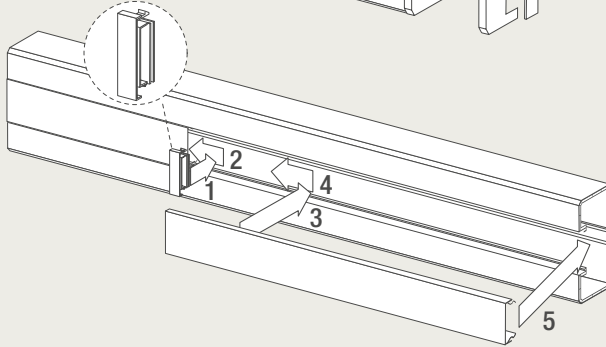
4



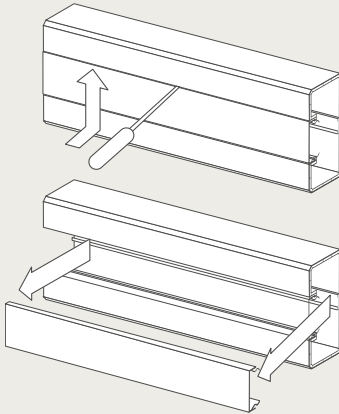
5



6



7

**Technische kenmerken installatiekanalen**

- Materiaal: PVC
- Slagsterkte: voldoet aan IK07 (EN 50102)
- Isolatieweerstand:  $\geq 100 \text{ MW}$
- Gebruikstemperatuur: bij transport:  $-25^{\circ}\text{C}$  tot  $60^{\circ}\text{C}$   
bij installatie:  $-5^{\circ}\text{C}$  tot  $60^{\circ}\text{C}$
- IP40: bescherming tegen indringen van vaste stoffen  $\varnothing > 1 \text{ mm}$
- 230 Vac, 16 A
- Brandklasse M1 volgens NF P 92-501 en FD P 92-507