

# Presence or absence detector 360°, 230 V, 32 m, secondary, for surface-mounting on high ceilings (white)

**350-20081**

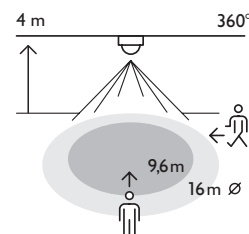
4 year warranty



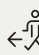
This presence or absence detector (360°, secondary) is suitable for surface mounting on high ceilings and is used to switch indoor lighting on and off but only in combination with a master (350-20080, 350-20070 or 350-20078). The detector has a circular detection area with a diameter of 16 to 32 m that can be adjusted using the cover mask. The device follows the settings of the master. The sensitivity of the secondary detector, though, can be set separately. This motion detector has an IP54 protection degree and complies with the European directives for EMC and safety, EN 60669-2-1. A maximum of ten secondary detectors can be connected per master.

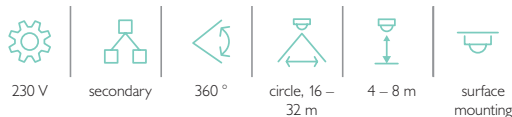
Finishing colour: white.



## Detection range



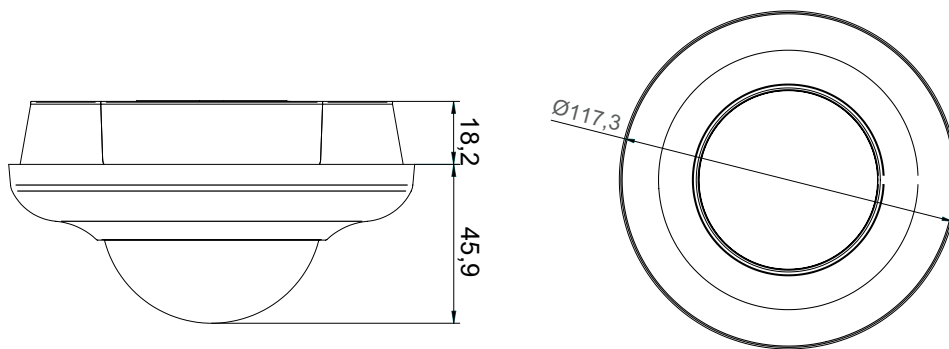
		
4 m	9,6 m	16 m
5 m	12 m	20 m
6 m	14,4 m	24 m
7 m	16,8 m	28 m
8 m	19,2 m	32 m



## Technical data

Article number	350-20081
Input voltage	230 Vac $\pm$ 10 %, 50 Hz
Detector output	230 V (ON/OFF)
Detection angle	360 °
Detection range (PIR)	circle, 16 – 32 m
Ambient temperature	-5 – +50 °C
Mounting method	surface mounting
Mounting height	4 – 8 m
Dimensions visible (HxWxD)	64.1 mm
Dimensions (HxWxD)	117 x 117 x 64.1 mm
Wire capacity	1 x 2.5 mm <sup>2</sup>
Protection degree	IP54
Marking	CE

## Dimensions



## Wiring diagram

