

# Indoor motion detector 180°, 230 V, 8 m, 2-wire 40 - 400 W , Finishing colour: piano black coated

**200-78040**

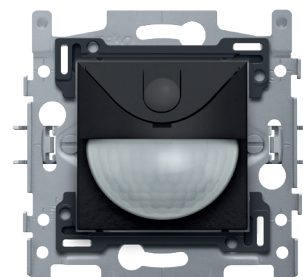
**4** year  
warranty

With this integrated motion detector with 2-wire, single-channel output from 40 to 400 W (only suitable for resistive load) you have a detection angle of 180° horizontally and 60° vertically within which all motion is detected. When a motion is detected, pre-selected lights are activated.  
Finishing colour: piano black coated.

## Technical data

Indoor motion detector 180°, 230 V, 8 m, 2-wire 40 - 400 W , Finishing colour: piano black coated.

- Function: The motion detector has a detection angle of 180° horizontally, and 60° vertically within which all motion is detected. When a motion is detected, pre-selected lights are activated.
- Colour: Bakelite®-look piano black coated (approximately RAL9005). Bakelite® is a registered trademark of Hexion GmbH.
- Connection terminals: 4 connection terminals
- Maximum load bulb: 400 W
- Maximum load 230V-halogen lamps: 400 W
- Relay contact: triac 1.7 A
- Light intensity range: 10 - 1000 lux
- Flush-mounting height: recommended from 0.8 to 1.2 m
- Minimum switch-off delay: 60 sec
- Maximum switch-off delay: 30 min
- Detection range (PIR): 8 to 9 m horizontal
- Detection angle horizontal: 180°
- Detection angle vertical: 60°
- Material central plate: The central plate is enamelled and made of rigid PC and ASA.
- Flush-mounting frame
  - 1 mm-thick metal
  - galvanized on all sides after cutting, even on the cut edges
  - with 4 grooves with screw hole of 7 mm
  - with 4 screw holes (indicated by a screw symbol) with a diameter of 3 mm for mounting on panels
- Flush-mounting depth: 40 mm minimum depth of the flush-mounting box
- Fixing method
  - with claws that can be rotated open using screws with a slotted screw head (slot 0.8 x 5 mm), for mounting in a flush-mounting box with grip surfaces
  - depth of engagement of claws: 31 mm
  - claws turn back completely when loosened
- Centre-to-centre distance
  - Simple and quick assembly of one or more mechanisms by the indication (chalk line, laser, etc.) of the centre of the flush-mounting frame
  - vertical coupling centre-to-centre distance 60 mm by sliding several bases into each other, they lock themselves automatically
  - vertical coupling centre-to-centre distance 71 mm using pre-formed lips at the bottom, by folding the lips downwards over a length of 1 mm, the bases support each other and the centre-to-centre distance is guaranteed.
  - horizontal connection of multiple bases is quick and perfect thanks to the folded-up dovetails on the left and right sides
  - extra robustness due to the folded-up edges on the outside of the base and the continuation into the inside of the base
- End border: The flush-mounting frame is equipped, both on the top and the bottom, with a dark grey, plastic end border. This border is made of



PC+ASA and is joined to the flush-mounting frame using a melting process. The corners of the two end borders are equipped with rectangular openings (7.9 x 1.5 mm) each containing a multi-positional snap hook. Thanks to the snap hooks, the 4 rectangular openings ensure that the faceplate can always be attached flat to the wall, even in cases of untidy plasterwork. This works in two directions: If the flush-mounting box sticks out of the plasterwork, the multi-positional snap hooks can compensate for a 1 to 1.2 mm margin; if the flush-mounting box is sunk too deeply in the plasterwork, the snap hooks can compensate for up to a 1.8 mm margin. The end borders also have 4 round openings that ensure the correct positioning of the faceplate in relation to the central plate.

- Wire connection
  - the sockets are equipped with screw terminals for clamping the wires.
- Wire capacity
  - 2 x 1.5 mm<sup>2</sup> or 1 x 2.5 mm<sup>2</sup> per connection terminal
- Input voltage: 230 Vac  $\pm$  10 %, 50 Hz
- An external push button or switch can be connected to the device.
- You can also turn lighting on and off manually with the push button on the unit. After four hours the light switches off automatically.
- Minimum ambient temperature: 0 °C
- Maximum ambient temperature: +40 °C
- Ambient temperature during storage and transport: -25 to +70 °C
- Marking: CE

