

Coloured socket outlet with pin earthing, shutters and voltage indication

For emergency power supply (e.g. in hospitals):

- green for e.g. general power supply,
- orange for e.g. power supply of no break networks,
- red for e.g. power supply of data networks.

The base and the finishing set have the same colour.

The base has a green LED.

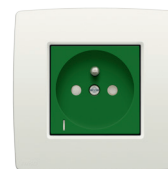


$\text{---} \text{C} \text{---} \frac{16 \text{ A}}{250 \text{ Vac}}$

Coloured socket outlet with pin earthing, shutters and voltage indication

For emergency power supply (e.g. in hospitals):

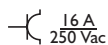
- green for e.g. general power supply,
- orange for e.g. power supply of no break networks,
- red for e.g. power supply of data networks.



The base and the finishing set have the same colour.

The base has a green LED.

- flush-mounting depth: 28.5 mm



195-66622 Pieces: 10
198-66622 Pieces: 10



196-66622 Pieces: 10
199-66622 Pieces: 10



197-66622 Pieces: 10

COMPLETE UNIT WITH SCREW TERMINALS AND CLAWS



195-66617 Pieces: 10
198-66617 Pieces: 10



196-66617 Pieces: 10
199-66617 Pieces: 10



197-66617 Pieces: 10

ACCESSORIES FOR VOLTAGE INDICATION



170-37096 Pieces: 10 LED lighting element, amber



170-37097 Pieces: 10 LED lighting element, green



170-37098 Pieces: 10 LED lighting element, red



170-37099 Pieces: 10 LED lighting element, blue

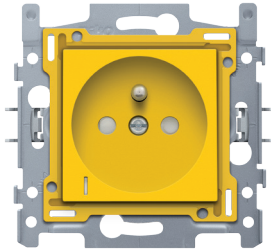


170-37100 Pieces: 10 LED lighting element, white

195-66622

4 year warranty

Socket outlet with voltage indication, earth pin and shutters, flush-mounting depth 28.5 mm, base and finishing set, plug-in terminals,



Socket outlet with voltage indication, earth pin and shutters. This socket outlet has a flush-mounting depth of 28.5 mm and is equipped with a plug-in terminals and claw fixing. Includes finishing set. A flush surround plate in the colour of your choice must be ordered separately. Finishing colour: yellow.

Socket outlet with voltage indication, earth pin and shutters, flush-mounting depth 28.5 mm, base and finishing set, plug-in terminals,. The sockets are equipped with plug-in terminals for clamping the wires. The stripping length (14 mm) of the wires is indelibly imprinted on the back of the base. When mounting in a flush-mounting box with grip surfaces, use claws that can be rotated open using screws with a slotted screwhead (slot 0.8 x 5 mm). The claws, which have a depth of engagement of 31 mm, turn back completely when loosened.

- Colour: The cover of the socket outlet is coloured in mass, yellow (roughly RAL 1023) and ensures that after the removal of the central plate, the socket outlet function remains clearly indicated. This is applicable in places where there are many circuits with specifically defined functions, for example, emergency power supplies in hospitals. The central plate is made of rigid PC

- Fire safety

- self-extinguishing plastic components (central plate and base cover): complies with a filament test of 650 °C

- halogen-free

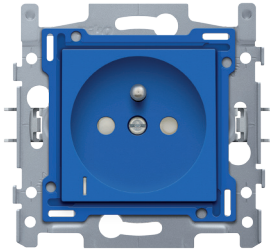
- Certification marks: CEBEC, NF



196-66622

4 year
warranty

Socket outlet with voltage indication, earth pin and shutters, flush-mounting depth 28.5 mm, base and finishing set, plug-in terminals,



Socket outlet with voltage indication, earth pin and shutters. This socket outlet has a flush-mounting depth of 28.5 mm and is equipped with a plug-in terminals and claw fixing. Includes finishing set. A flush surround plate in the colour of your choice must be ordered separately. Finishing colour: blue.

Socket outlet with voltage indication, earth pin and shutters, flush-mounting depth 28.5 mm, base and finishing set, plug-in terminals,. The sockets are equipped with plug-in terminals for clamping the wires. The stripping length (14 mm) of the wires is indelibly imprinted on the back of the base. When mounting in a flush-mounting box with grip surfaces, use claws that can be rotated open using screws with a slotted screwhead (slot 0.8 x 5 mm). The claws, which have a depth of engagement of 31 mm, turn back completely when loosened.

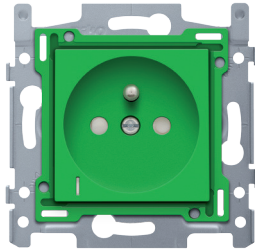
- Colour: The cover of the socket outlet and the central plate are coloured in mass, blue (approximately RAL 5005) and ensures that after the removal of the central plate, the socket outlet function remains clearly indicated. This is applicable in places where there are many circuits with specifically defined functions, for example, emergency power supplies in hospitals. The central plate is made of rigid PC
- Fire safety
 - self-extinguishing plastic components (central plate and base cover): complies with a filament test of 650 °C
 - halogen-free
- Certification marks: CEBEC, NF



197-66622

4 year warranty

Socket outlet with voltage indication, earth pin and shutters, flush-mounting depth 28.5 mm, base and finishing set, plug-in terminals,



Socket outlet with voltage indication, earth pin and shutters. This socket outlet has a flush-mounting depth of 28.5 mm and is equipped with a plug-in terminals and claw fixing. Includes finishing set. A flush surround plate in the colour of your choice must be ordered separately. Finishing colour: green.

Socket outlet with voltage indication, earth pin and shutters, flush-mounting depth 28.5 mm, base and finishing set, plug-in terminals,. The sockets are equipped with plug-in terminals for clamping the wires. The stripping length (14 mm) of the wires is indelibly imprinted on the back of the base. When mounting in a flush-mounting box with grip surfaces, use claws that can be rotated open using screws with a slotted screwhead (slot 0.8 x 5 mm). The claws, which have a depth of engagement of 31 mm, turn back completely when loosened.

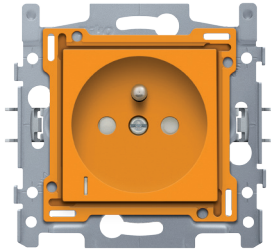
- Colour: The cover of the socket outlet and the central plate are coloured in mass, green (approximately RAL 6010) and ensures that after the removal of the central plate, the socket outlet function remains clearly indicated. This is applicable in places where there are many circuits with specifically defined functions, for example, emergency power supplies in hospitals. The central plate is made of rigid PC
- Fire safety
 - self-extinguishing plastic components (central plate and base cover): complies with a filament test of 650 °C
 - halogen-free
- Certification marks: CEBEC, NF



198-66622

4 year
warranty

Socket outlet with voltage indication, earth pin and shutters, flush-mounting depth 28.5 mm, base and finishing set, plug-in terminals,



Socket outlet with voltage indication, earth pin and shutters. This socket outlet has a flush-mounting depth of 28.5 mm and is equipped with a plug-in terminals and claw fixing. Includes finishing set. A flush surround plate in the colour of your choice must be ordered separately. Finishing colour: orange.

Socket outlet with voltage indication, earth pin and shutters, flush-mounting depth 28.5 mm, base and finishing set, plug-in terminals,. The sockets are equipped with plug-in terminals for clamping the wires. The stripping length (14 mm) of the wires is indelibly imprinted on the back of the base. When mounting in a flush-mounting box with grip surfaces, use claws that can be rotated open using screws with a slotted screwhead (slot 0.8 x 5 mm). The claws, which have a depth of engagement of 31 mm, turn back completely when loosened.

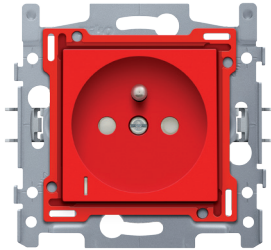
- Colour: The cover of the socket outlet and the central plate are coloured in mass, orange (approximately RAL 2008) and ensures that after the removal of the central plate, the socket outlet function remains clearly indicated. This is applicable in places where there are many circuits with specifically defined functions, for example, emergency power supplies in hospitals. The central plate is made of rigid PC
- Fire safety
 - self-extinguishing plastic components (central plate and base cover): complies with a filament test of 650 °C
 - halogen-free
- Certification marks: CEBEC, NF



199-66622

4 year
warranty

Socket outlet with voltage indication, earth pin and shutters, flush-mounting depth 28.5 mm, base and finishing set, plug-in terminals,



Socket outlet with voltage indication, earth pin and shutters. This socket outlet has a flush-mounting depth of 28.5 mm and is equipped with a plug-in terminals and claw fixing. Includes finishing set. A flush surround plate in the colour of your choice must be ordered separately. Finishing colour: red.

Socket outlet with voltage indication, earth pin and shutters, flush-mounting depth 28.5 mm, base and finishing set, plug-in terminals,. The sockets are equipped with plug-in terminals for clamping the wires. The stripping length (14 mm) of the wires is indelibly imprinted on the back of the base. When mounting in a flush-mounting box with grip surfaces, use claws that can be rotated open using screws with a slotted screwhead (slot 0.8 x 5 mm). The claws, which have a depth of engagement of 31 mm, turn back completely when loosened.

- Colour: The cover of the socket outlet and the central plate are coloured in mass, red (approximately RAL 3001) and ensures that after the removal of the central plate, the socket outlet function remains clearly indicated. This is applicable in places where there are many circuits with specifically defined functions, for example, emergency power supplies in hospitals. The central plate is made of rigid PC
- Fire safety
 - self-extinguishing plastic components (central plate and base cover): complies with a filament test of 650 °C
 - halogen-free
- Certification marks: CEBEC, NF

