



N I K O I N V I S I B L E

Niko Invisible





Design and innovation since 1919

Niko was founded in 1919 by two brothers, Alfons and Werner De Backer. In their workshops in Sint-Niko-laas, they designed and manufactured switches and socket outlets that quickly won over the Belgian market. In 1960, Niko made the strategic decision to focus on design and started its journey abroad with the inter70.

A family-owned business, Niko develops and manufactures electr(on)ic solutions to enhance buildings to better suit the needs of the people who live and work in them. Niko is dedicated to providing well-thought-out design, innovative technology and an environmentally friendly approach. To this end, Niko invests heavily in research and development, and high-quality production.

Over the years, Niko has won numerous international design awards, like Red Dot Awards, A' Design Awards, iF Design awards and the prestigious Belgian Henry Van de Velde Award.

Always close at hand, simply hidden in plain sight

Minimalist design embraces simplicity at every stage, from the initial concept to the finishing touches. Architects and homeowners who pursue minimalism focus on intentional details that enhance their clean, understated vision.

Niko Invisible is our answer to that call for precision and sharp sophistication: a series of hyper-minimalist switches, sockets, data connections and orientation lighting for the home. Each piece supports the desire for a sleek and uncluttered interior. Never contrasting, competing with, or distracting from the grand idea for a space.









Niko Invisible

The premium collection of Niko Invisible is designed to be boldly invisible. Meant for metamorphosis, these products can be finished to blend smoothly into their surroundings for an ultra-minimalist look. Each one is highly versatile and prepared to match any wallpaper pattern or paint colour.

That adaptable quality allows for these essential, functional elements to be exactly where they're needed, even as they disappear from view and become one with the architect's creation. Only their subtle circular outline remains visible, allowing uninterrupted surfaces and clean lines to shine.

Always close at hand, simply hidden in plain sight.



Push button control

The collection's centrepiece is a tactile push button that can be made near-invisible to complement clean lines and a minimalist design vision. A visual transformation of the button's surface allows it to meld into any wall or piece of furniture.

Niko Invisible push buttons can control one to four functions. Naturally, they offer the usual on/off and motor control features, as well as dimming. What's more, they can be used in a smart home system like Niko Home Control, where each button can be programmed to activate lights, turn on ventilation or create the perfect atmosphere in an instant.



The touchpoints are positioned at the top, bottom, left and right side of the button. A simple 45-degree rotation can shift the touchpoints to top left, top right, bottom left and bottom right instead. This allows for a more intuitive control of, for example, a duo of rolling shutters.

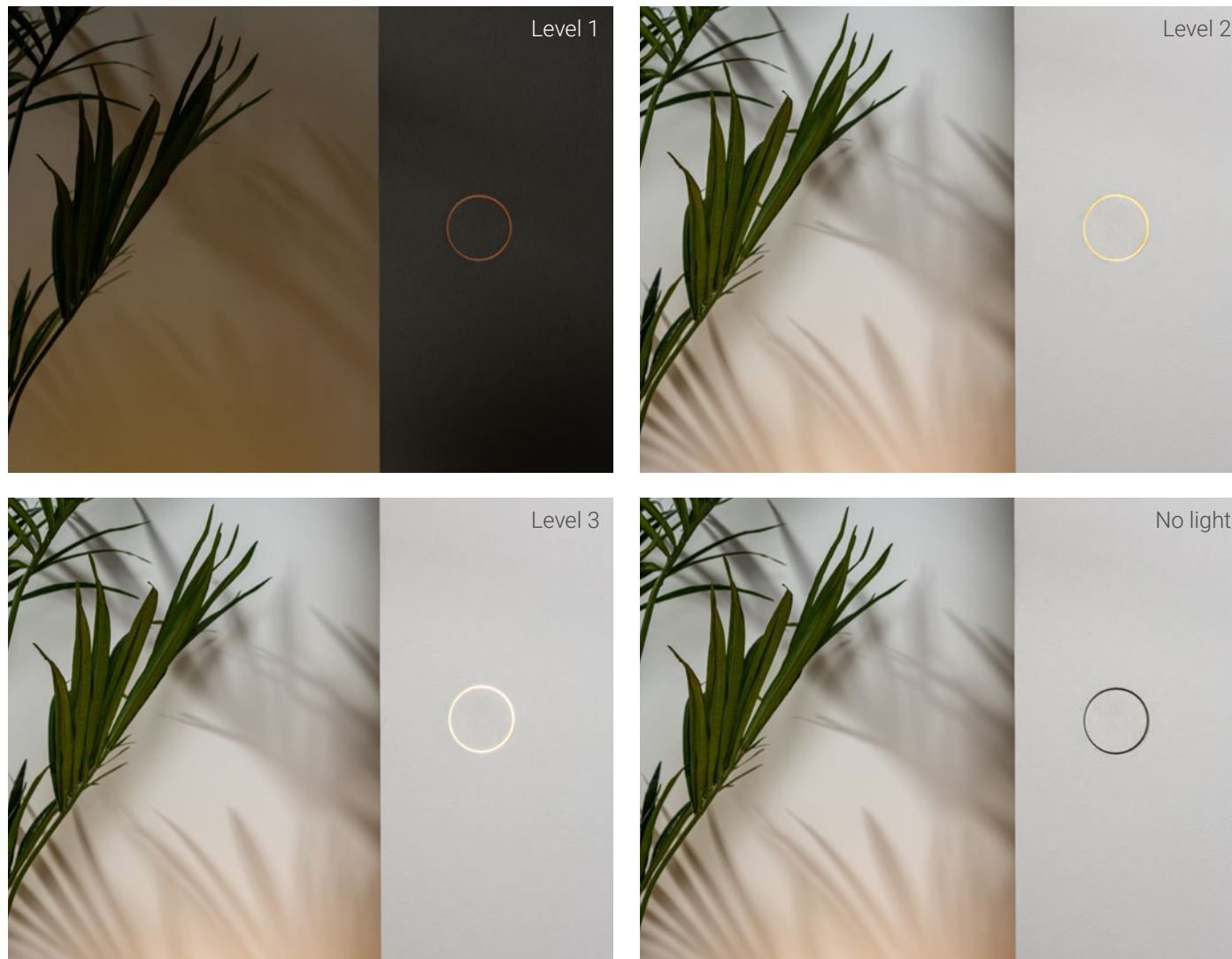


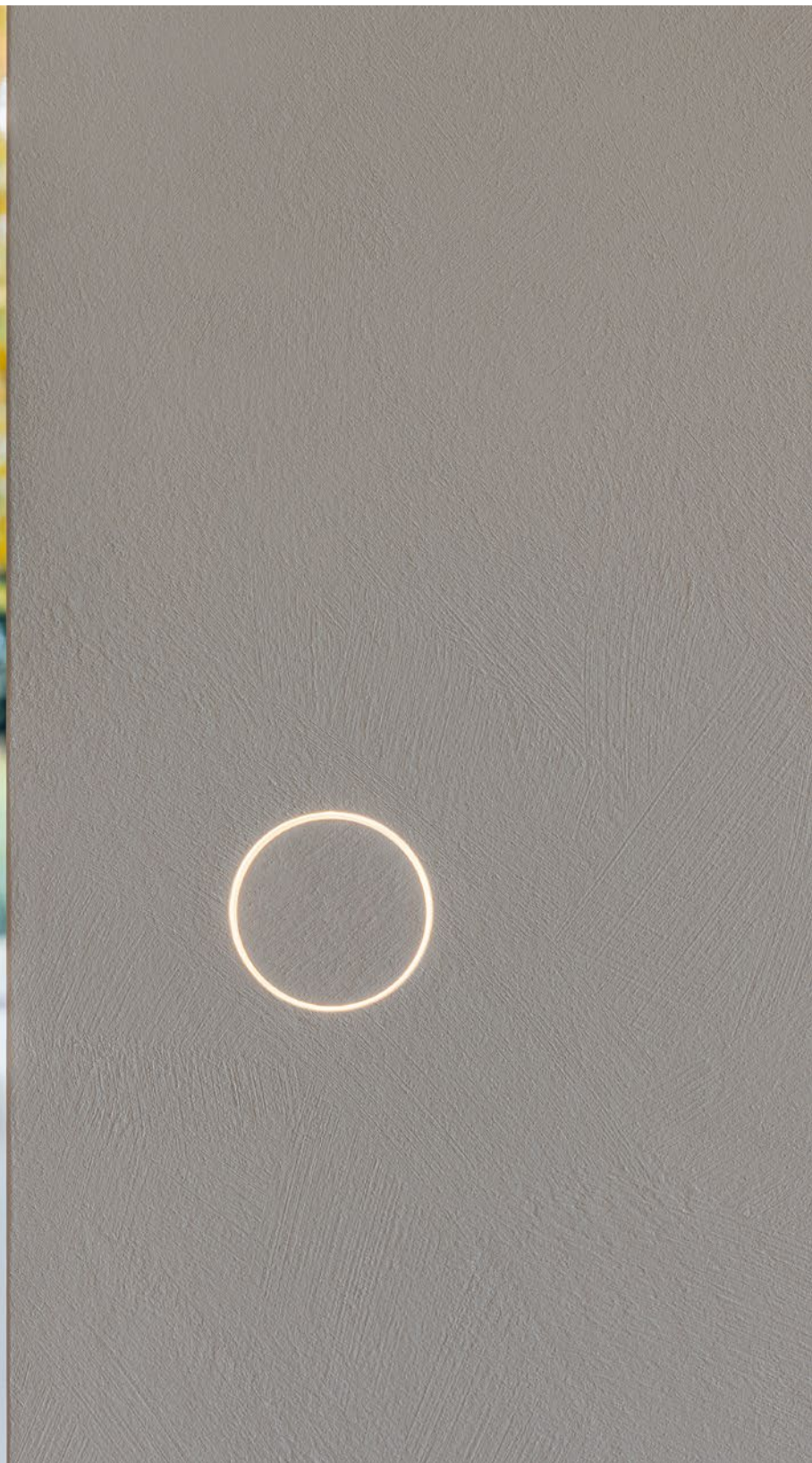
LED light

The Niko Invisible push buttons are equipped with a subtle LED light, elegantly illuminating the contour of the push button.



The LED offers different levels of light intensity. The first option is a faint glow that's perfect for bedrooms and only subtly visible in a darkened space. The second level of illumination can be observed in indirect daylight and provides stronger visual guidance in the dark. The third level of LED light is its brightest setting. At this level, the LED light of the switch matches the intensity of the LED light in our orientation lighting solution, which is typically used in corridors and staircases. Finally there is the option to have no LED light at all.







Natural harmony

In a home rich with raw and natural materials - like travertine floors, stone countertops and textured walls - Niko Invisible complements the aesthetic with elegant simplicity. These switches and sockets blend effortlessly into their surroundings, enhancing the beauty of every detail.







The art of disappearing

In a home where art and design objects take centre stage, Niko Invisible subtly blends into the walls, ensuring that the spotlight remains on the carefully curated pieces. It is designed in harmony with your space.







Seamless integration

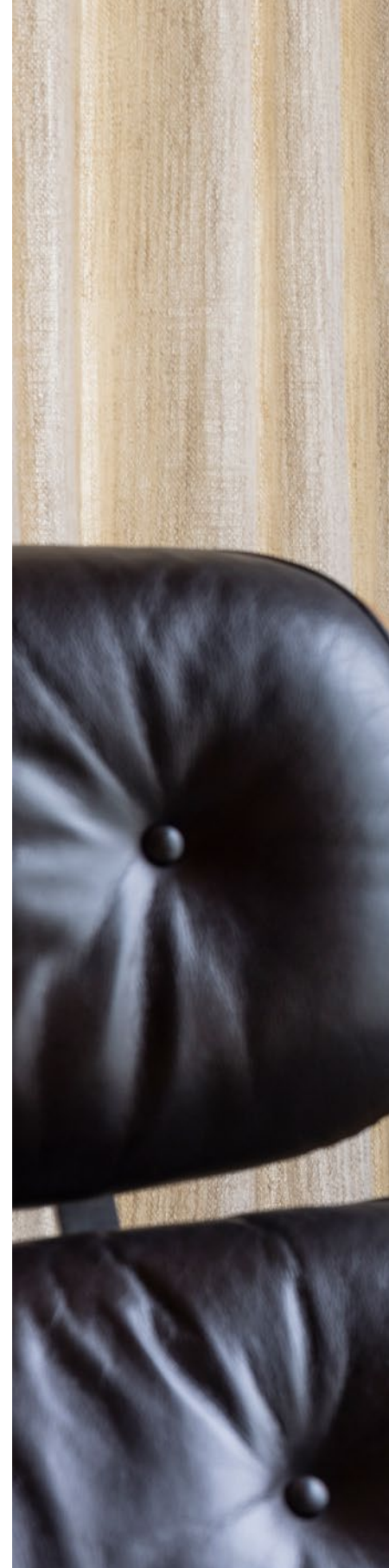
A minimalist home without baseboards or door frames demands uninterrupted lines and pure simplicity. Niko Invisible integrates seamlessly into such spaces, maintaining the clean, continuous aesthetic without compromise.

Various functions

Niko Invisible is built for invisibility. Its minimalist, customisable design and full range of products offer unlimited flexibility throughout the home. Besides the push button and socket outlets, different functions are available:

The collection offers four data connections: a double RJ45, a coax/RJ45 combination, a dual smart USB-CA function and a dual smart USB-CC function as of summer 2025.

A blind plate can be used for a cable outlet or to plan ahead for additional functions.





Orientation lighting

Rounding out the collection is an orientation lighting solution that features warm white LED light, just like the push buttons' LED light, where a gentle glow emanates from the round contour. This orientation lighting is designed as a polished solution for a touch of visibility in hallways or along staircases where discreet step lights or corridor lighting are needed.





Available in white and anthracite

The entire Niko Invisible collection is available in white or anthracite, and each product can be refinished to coordinate with or blend into its surrounding surface.





Push button (1 to 4 functions)
154-10001



Socket outlet pin earthing
154-10666



Socket outlet side earthing
154-10669



Dual USB-CA charger
154-10513



Dual USB-CC charger*
154-10520



2xRJ45 cat6A
154-10172



Coax RJ45
154-10358



Blind plate
154-10009



Orientation lighting
154-10385

**Available as of summer 2025. Product design subject to change.*



Push button (1 to 4 functions)
122-10001



Socket outlet pin earthing
122-10666



Socket outlet side earthing
122-10669



Dual USB-CA charger
122-10513



Dual USB-CC charger*
122-10520



2xRJ45 cat6A
122-10172



Coax RJ45
122-10358



Blind plate
122-10009



Orientation lighting
122-10385

**Available as of summer 2025. Product design subject to change.*





Proven quality and reliability

For more than a century, the Niko name has been a guarantee for exceptional quality and profound reliability. This new collection represents a continuation of all those years of experience and expertise, known and appreciated by homeowners, designers and installers alike.

The new Niko Invisible range pairs our top-quality mechanisms with a sleek, adaptable look that brings elevated minimalism to any space.



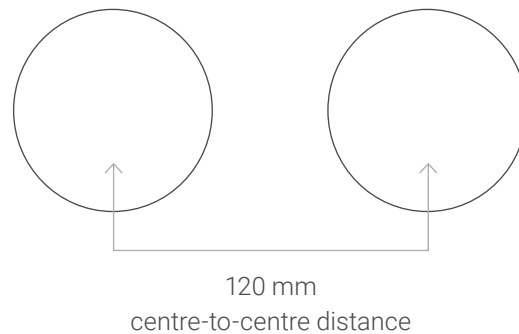




Centre-to-centre distance

The Niko Invisible collection consists entirely of single mechanisms, so push buttons and sockets can be assembled in different configurations horizontally or vertically to match the desired functionality of any room.

For precision alignment and consistent spacing between each mechanism, installers should follow the recommended centre-to-centre distance of 120 mm during installation.





Made by craftsmen, for craftsmen

Our products are designed to be installed completely flush with the wall, requiring precision and attention to detail. With our specially developed installation kits, we simplify the process, enabling every craftsman to achieve a seamless result they can be proud of.



Install with ease

There is one installation kit for flush-mounting in brick walls. For installation in plaster board, there is an installation kit, as well as a custom drilling tool.

Go to niko.eu/installinvisible for manuals and information on how to install.





Installation in plasterboard walls

Using our specially designed drilling tool, craftsmen can easily create a precise opening in the wall to fit the installation ring. The ring should then be secured into the wall using chemical anchor. After some curing time, a cardboard insert is placed inside the ring to ensure clean application of finishing plaster around the edges. Once the plaster has been applied, the cardboard is removed, allowing for effortless installation of the mounting box.

- 170-12095: Flush-mounting system for plasterboard
- 170-12097: Flush-mounting ring for plasterboard
- 170-10099: Hole saw for plasterboard



Installation in brick walls

For brick walls, the installation involves a few additional steps to ensure a flawless finish. After drilling the hole and preparing the wiring, a cardboard insert is placed in the opening to create a clean base for plastering. The installation ring is then inserted and finished with plaster. A second cardboard insert protects the interior of the ring during this process. Once dried, the mounting box is seamlessly fitted into the ring.

- 170-12090: Flush-mounting system for brickwork
- 170-12092: Flush-mounting ring for brickwork





A perfectly integrated result

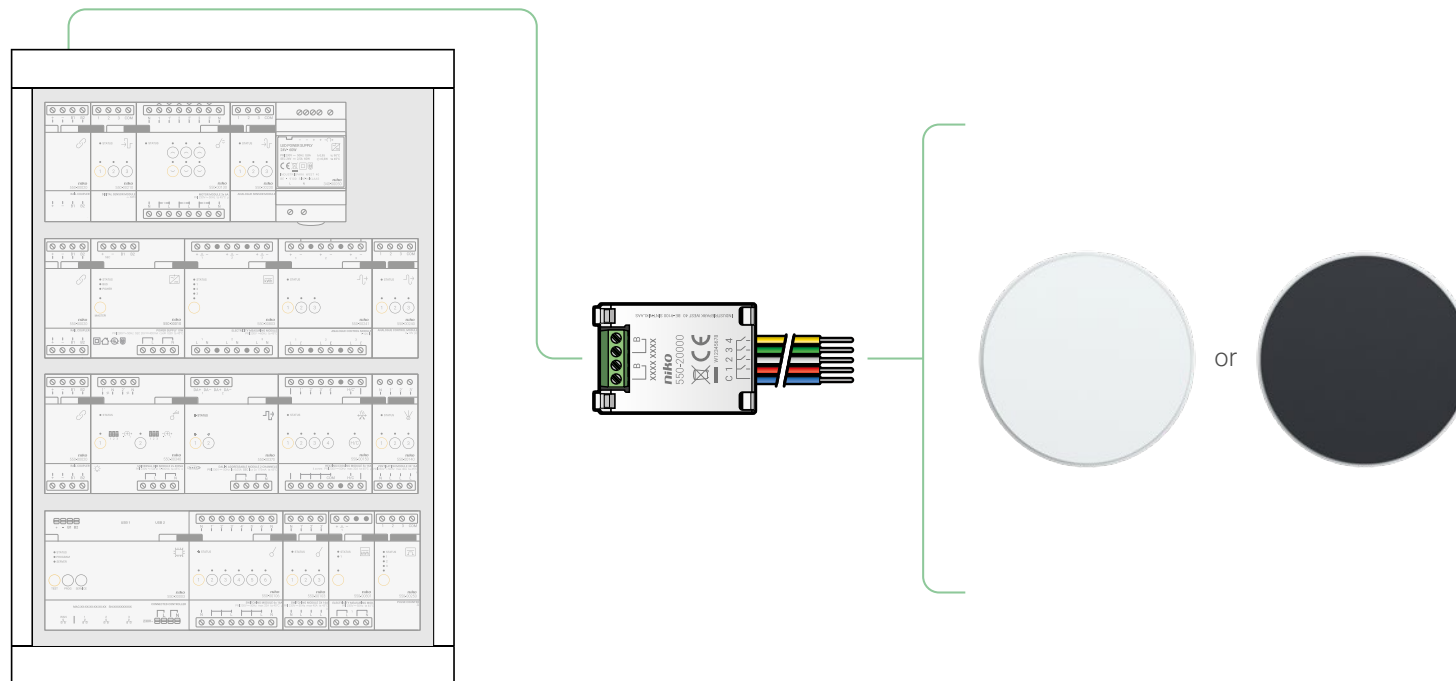
After the mounting box is installed, both the wall and the product are finished with the same material, creating a beautifully unified appearance.

When using textured paint or wallpaper, we recommend applying it only on the wall surface. The deeper surfaces such as the centre of the socket outlet or the edge of the wall cavity can be finished using a smooth, texture-free paint to match the colour of the rest of the product.

Finally, the product is mounted, achieving a sleek, seamless finish that highlights the craftsman's expertise.

Niko Home Control

Niko Invisible push buttons can be integrated in a Niko Home Control installation on bus wiring. As shown in the scheme below, you can use a push button interface (550-20000) to control your smart installation with Niko Invisible.





Niko designs electr(on)ic solutions to enhance buildings to better suit the needs of the people who live and work in them. By using less energy, by improving light comfort and safety and by making sure all applications work together seamlessly. Buildings with Niko are more efficient, are controllable from a distance and interact within bigger ecosystems. Niko is a Belgian family business from Sint-Niklaas with 700 employees and 10 European branches.

At Niko, there is one question that keeps us busy every day: "How can we enhance buildings to better suit your needs?"



Niko sa
Industriepark West 40
B-9100 Sint-Niklaas
Belgium
sales.be@niko.eu
+32 3 778 90 00
www.niko.eu

niko