

# Socket outlet with voltage indication, pin earthing and shutters, flush-mounting depth 28.5 mm, base and finishing set, screw terminals, blue

196-66617

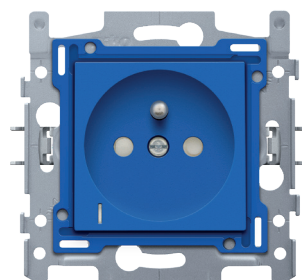
4 year warranty

Socket outlet with voltage indication, pin earthing and shutters. This socket outlet has a flush-mounting depth of 28.5 mm and is equipped with screw terminals and claw fixing. Includes finishing set. A faceplate in the colour of your choice must be ordered separately. Finishing colour: blue.

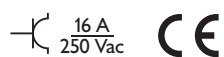
## Technical data

Socket outlet with voltage indication, pin earthing and shutters, flush-mounting depth 28.5 mm, base and finishing set, screw terminals, blue.

- Fixing method
  - with claws that can be rotated open using screws with a slotted screw head (slot 0.8 x 5 mm), for mounting in a flush-mounting box with grip surfaces
  - depth of engagement of claws: 31 mm
  - claws turn back completely when loosened
- End border: 4 rectangular openings (7 x 2.5 mm) which, if the flush-mounting box protrudes from the plasterwork, can compensate for a margin of between 1 and 1.2 mm, so that the faceplate can still butt up perfectly against the wall
- Wire connection
  - the sockets are fitted with cage clamps with permanent screws with combination screwheads (Pz2 or slot 1 x 5.5 mm)
  - every screw is provided with a screwdriver slot that prevents the screwdriver from sliding off the screwhead.
- Stripping length
  - 14 mm stripping length
  - indelibly indicated at the rear side: stripping length
- Lighting element
  - the central plate has a vertical, rectangular, transparent lens (1 x 5 mm) on the bottom left which makes the green LED of the voltage indication module visible
  - seen from the front of the socket outlet, the voltage indication module is clicked into the back of the base, with the LED in the bottom left corner. The voltage indication module is clicked onto the back of the base and in doing so is immediately connected.
  - the voltage indication module with green LED has a polyamide housing
  - the green light is produced by an LED with very limited power consumption (0.25 W). It is shockproof and does not radiate any heat. The LED has a life span of min. 50,000 burning hours
- Fire safety
  - self-extinguishing plastic components (central plate and base cover): complies with a filament test of 650 °C
  - halogen-free
- The combination of a mechanism, a central plate and a faceplate has an impact-resistance of IK06



- Marking: CE



### Wiring diagram

