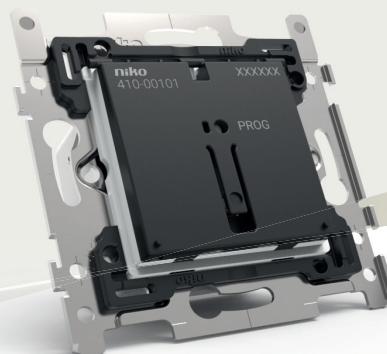
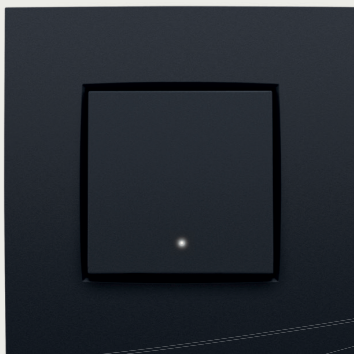


410-00XX0

# Single and double smart switch



Recommended price:

Single: €59.00

Double: €89.00

Excl. VAT

Excl. finishing

Thanks to the **smart switch**, you can now effortlessly extend all single, multiway or intermediate switching in your home or connect them to Niko connected switch. Replace the switch by a smart switch (as long as a N connection is installed) and you're done! Additional switches (in case of multiway or intermediate switching) can be replaced by regular Niko push buttons (170-00000), if the wiring permits it. The smart switch can also be **expanded with wireless switches**, which can be stuck anywhere.

Would you like to be able to **activate the right mood with one push of the button** for reading a book in the living room? That, too, is possible with the smart switch. Connect the switch to any wireless receiver, and your floor lamp or sideboard lighting will light up in unison with the rest of the lighting. As if that were not enough, the smart switch also operates perfectly with the **Niko gateway**. Because of this, you can control your smart switch **via your computer, smartphone, tablet or smartwatch**.

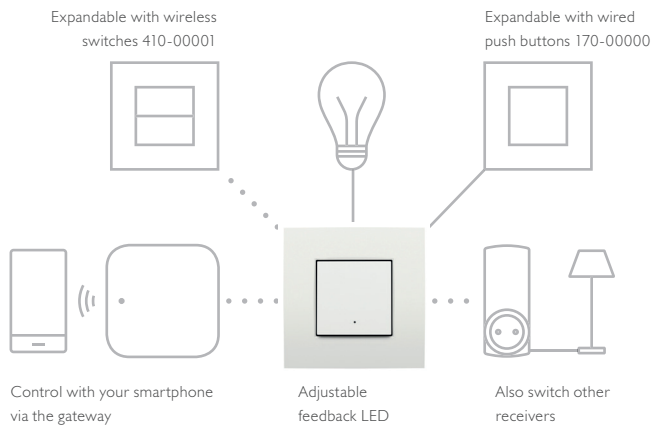
The smart switch exists in a single and double variation. Every contact can switch up to 10 A (combined, a double smart switch can switch up to 16 A). It is available in every colour from the Niko range and fits perfectly in all Niko flush surround plates.

The smart switch communicates with all wireless transmitters and receivers from the Niko range operating according to the Easywave protocol. Thanks to its **versatility**, it's the ideal solution for any renovation project in which drilling or channelling work should be avoided.

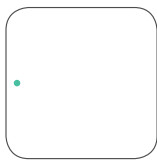
Read all about it on [www.niko.eu/connectedswitch](http://www.niko.eu/connectedswitch)

**niko**  
*Illuminating ideas.*

## The new generation of switches

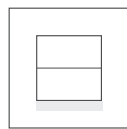


## Can be extended with Niko wireless solutions based on the Easywave protocol



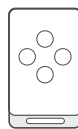
Gateway

410-10000,  
410-01001,  
410-01002



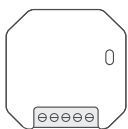
Wireless switches

410-00001,  
410-00002,  
05-315,  
410-00362



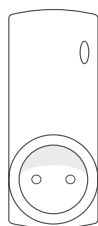
Hand-held transmitters

05-311,  
05-312,  
05-317,  
05-318



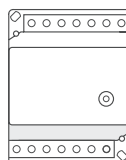
Built-in receivers

05-331, 05-332,  
05-333, 05-335,  
05-360, 05-361



Plug-through sockets

05-340, 05-341



Modular receivers

05-336, 05-338,  
05-350, 05-351,  
05-352, 05-353

## Technical data

Single smart switch:

- Device for flush-mounting (flush-mounting depth 29.5 mm)
- Dimensions (HxWxD): 70 x 70 x 42 mm
- Input voltage: 230 V
- Standby consumption: 0.38 W
- Ambient temperature: 0 - 40 °C
- Protection degree: IP20
- Communication protocol: Easywave 868.3 MHz
- Maximum load: 10 A
  - Incandescent lamps: 2,300 W
  - 230V LED lamps and economy lamps (CLFi): 100 W
  - Fluorescent lamps: 600 W
  - Low-voltage halogen lamps: 600 VA

Double smart switch:

- Device for flush-mounting (flush-mounting depth 29.5 mm)
- Dimensions (HxWxD): 70 x 70 x 42 mm
- Input voltage: 230 V
- Standby consumption: 0.38 W
- Ambient temperature: 0 - 40 °C
- Protection degree: IP20
- Communication protocol: Easywave 868.3 MHz
- Maximum load: 10 A per contact (max. 16 A combined)
  - Incandescent lamps: 2,300 W (per contact)
  - 230V LED lamps and economy lamps (CLFi): 100 W (per contact)
  - Fluorescent lamps: 600 W (per contact)
  - Low-voltage halogen lamps: 600 VA (per contact)

## Variants

- 410-00100 – Single smart switch with claws (BE)
- 410-00110 – Single smart switch without claws (NL/FR)
- 410-00200 – Double smart switch with claws (BE)
- 410-00210 – Double smart switch without claws (NL/FR)