

Finishing set for hotel card switch, piano black coated

200-61901

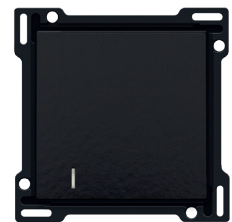
4 year warranty

Central plate for a hotel card switch. This switch is almost exclusively used in hotel rooms. On the top of the switch, you can insert the hotel card. The lens indicates that you can operate the light in your room. Finishing colour: piano black coated.

Technical data

Finishing set for hotel card switch, piano black coated. This central plate is surrounded with a flat edge that is equipped at all 4 corners with a rectangular opening, each containing a multi-positional snap hook. The construction of the central plate ensures that the faceplate can always be attached flat to the wall, even in cases of untidy plasterwork. This works in two directions: If the flush-mounting box sticks out of the plasterwork, the multi-positional snap hooks can compensate for a 1 to 1.2 mm margin; if the flush-mounting box is sunk too deeply in the plasterwork, the snap hooks can compensate for up to a 1.8 mm margin. The flat edge around the central plate also has 4 round openings that ensure the correct positioning of the faceplate in relation to the central plate. After mounting all components (faceplate, finishing set and switch), no metal parts are visible thanks to the flat edge of the central plate.

- Function: First, the intermediate plate is clicked onto the mechanism. Afterwards, the central plate is clicked onto the mechanism. The central plate is also equipped with a window and has a slot for a hotel card. Suitable cards: width: min. 45 mm / max. 60 mm, thickness: min. 0.75 mm / max. 1.2 mm.
 - Material central plate: The central plate is enamelled and made of rigid PC and ASA.
 - Colour: enamelled Bakelite®-look piano black (approximately NCS S 9000 N, RAL 9005). Bakelite® is a registered trademark of Hexion GmbH
 - Lens: The key on the push button is fitted at the bottom with a small amber-coloured LED (1.5 x 1.5 mm) to indicate the status of the action.
 - Dismantling: For dismantling the central plate, the flat edge is equipped with two notches indicated by a screwdriver symbol. The central plate can easily be dismantled using a slotted screwdriver.
 - Protection degree: IP41 for the combination of a mechanism, central plate and faceplate
 - Impact resistance: The combination of a mechanism, a central plate and a faceplate has an impact resistance of IK06
 - Fire safety
 - the plastic parts of the central plate are self-extinguishing (comply with a filament test of 650 °C)
 - the plastic parts of the central plate are halogen-free
 - Dimensions of finishing with flat edge: 56 x 56 mm (HxW)
- Dimensions of visible area of finishing: 45 x 45 mm (HxW)
- Dimensions (HxWxD): 55.8 x 55.8 x 10.5 mm
 - Certification marks: CEBEC, SEMKO, VDE, DEMKO, NF, KEMA, ÖVE
 - Marking: CE



www.niko.eu

niko

200-61901 - 13-05-2025