

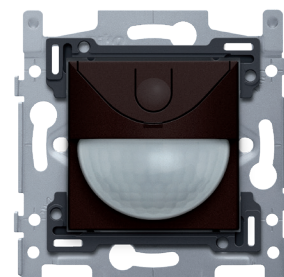
180° motion detector with Nikobus-interface actuator, 8 m, dark brown

124-78051

4 year warranty

With this integrated motion detector with Nikobus-interface actuator, you have a detection angle of 180° horizontally and 60° vertically within which all motion is detected. When a motion is detected, pre-selected lights are activated. Finishing colour: dark brown

The Nikobus reference codes no longer feature in the Niko catalogue. We are no longer actively promoting the Nikobus products. We do, however, still make them in order to source spare parts or to complete an existing installation. For new projects, we recommend choosing Niko Home Control.



Technical data

180° motion detector with Nikobus-interface actuator, 8 m, dark brown.

- Function: This interface actuator translates the switching command originating from the connected sensor into a Nikobus telegram and transmits it over the bus. Equipped with two external inputs for push buttons or switches.
- Colour: enamelled dark brown
- Connection terminals: 4 connection terminals
- Light intensity range: 10 - 1000 lux
- Flush-mounting height: recommended from 0.8 to 1.2 m
- Minimum switch-off delay: 60 sec
- Maximum switch-off delay: 30 min
- Detection range (PIR): 8 to 9 m horizontal
- Detection angle horizontal: 180°
- Detection angle vertical: 60°
- Material central plate: The central plate is enamelled and made of rigid PC and ASA.
- Flush-mounting frame
 - 1 mm-thick metal
 - galvanized on all sides after cutting, even on the cut edges
 - with 4 grooves with screw hole of 7 mm
 - with 4 screw holes (indicated by a screw symbol) with a diameter of 3 mm for mounting on panels
- Flush-mounting depth: 40 mm minimum depth of the flush-mounting box
- Fixing method
 - with screws for simple fixing in a flush-mounting box with grip surfaces
- Centre-to-centre distance
 - Simple and quick assembly of one or more mechanisms by the indication (chalk line, laser, etc.) of the centre of the flush-mounting frame
 - vertical coupling centre-to-centre distance 60 mm by sliding several bases into each other, they lock themselves automatically
 - vertical coupling centre-to-centre distance 71 mm using pre-formed lips at the bottom, by folding the lips downwards over a length of 1 mm, the bases support each other and the centre-to-centre distance is guaranteed.
 - horizontal connection of multiple bases is quick and perfect thanks to the folded-up dovetails on the left and right sides
 - extra robustness due to the folded-up edges on the outside of the base and the continuation into the inside of the base
- End border: The flush-mounting frame is equipped, both on the top and the bottom, with a dark grey, plastic end border. This border is made of PC+ASA and is joined to the flush-mounting frame using a melting process. The corners of the two end borders are equipped with rectangular openings (7.9 x 1.5 mm) each containing a multi-positional snap hook. Thanks to the snap hooks, the 4 rectangular openings ensure that the faceplate can always be attached flat to the wall, even in cases of untidy plasterwork. This works in two directions: If the flush-mounting box sticks out of the plasterwork, the multi-positional snap hooks can compensate for a 1 to 1.2 mm margin; if the flush-mounting box is sunk too deeply in the plaster-

work, the snap hooks can compensate for up to a 1.8 mm margin. The end borders also have 4 round openings that ensure the correct positioning of the faceplate in relation to the central plate.

- Wire capacity
 - 2 x 1.5 mm² or 1 x 2.5 mm² per connection terminal
- You can also turn lighting on and off manually with the push button on the unit. After four hours the light switches off automatically.
- Minimum ambient temperature: 0 °C
- Maximum ambient temperature: +40 °C
- Ambient temperature during storage and transport: -25 to +70 °C
- Marking: CE

