

Presence or absence detector PIR 360°, 230 V, 2 channels, 24 m, master, for surface-mounting. (white)

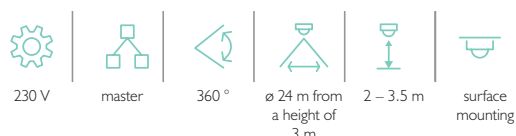
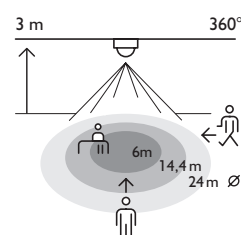
350-20082

4 year warranty

This presence or absence detector with two channels (360°, 10 A) is suitable for surface-mounting on ceilings and is used to switch indoor lighting or ventilation on and off. The detector has a circular detection area with a diameter of up to 24 m that can be adjusted using the cover mask. The device with integrated light sensor allows to set up each channel separately as a presence or as an absence detector. When used as a presence detector, the lighting automatically switches on and off (as soon as the switch-off delay has elapsed). When used as an absence detector, the lighting must always be manually switched on first using an NO push button, after which it will be automatically switched off (as soon as the switch-off delay has elapsed). The device is also equipped with the 'eco off' function, which allows the user to switch the lighting off using a connected NO push button without having to wait for the switch-off delay. If the lighting is not switched off manually, it will be switched off automatically once the switch-off delay has elapsed. The device has an IP54 protection degree, two potential-free contacts and conforms to the European EN 60669-2-1 standard for EMC and safety. The set-up can be performed manually on the device itself or via a remote control. The product can be used as a stand-alone unit or in combination with a maximum of ten secondary detectors. Finishing colour: white.



Detection range



2 m	4 m	10 m	16 m
2,5 m	5 m	12 m	20 m
3 m	6 m	14,4 m	24 m

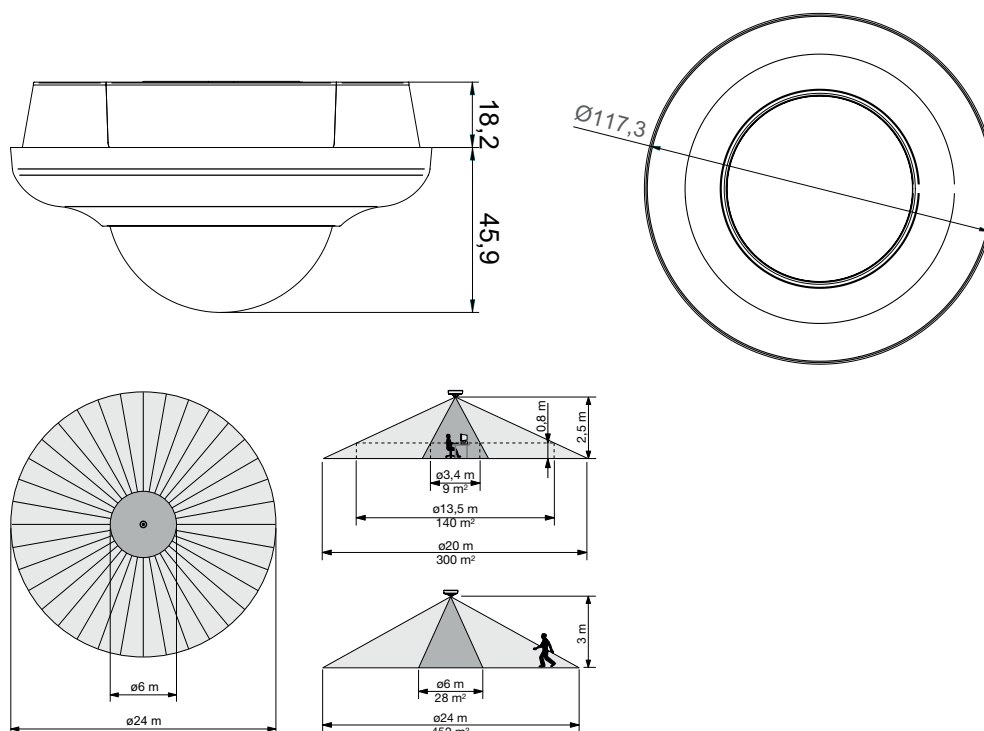
Technical data

Article number	350-20082
Input voltage	230 Vac \pm 10 %, 50 Hz
Detector output	230 V (ON/OFF)
Relay contact	NO (max. 10 A), potential-free, light- and motion-sensitive
Maximum load incandescent and halogen lamps ($\cos\phi = 1$)	2300 W
Maximum load economy lamps (CFLi)	350 W
Maximum load LED lamps 230 V	350 W
Maximum capacitive load	140 μ F
Maximum switching current	165 A/20 ms – 800 A/200 μ s
Light intensity range	20 lux – 1000 lux
Number of channels	2 channels
Switch-off delay	2 min – 1 h, ∞
Detection angle	360°
Detection range (PIR)	\varnothing 24 m from a height of 3 m
Ambient temperature	-5 – +50 °C
Mounting method	surface mounting
Mounting height	2 – 3.5 m
Dimensions visible (HxWxD)	641 mm
Dimensions (HxWxD)	117.3 x 117.3 x 64.1 mm
Wire capacity	3 x 2.5 mm ²
Protection degree	IP54
Marking	CE

Accessories

350-41936	Universal remote control for smartphone
350-20089	IR remote control for presence or absence detectors (360°, 230 V, master) with one channel for flush mounting (350-20070) and for surface mounting (350-20078)

Dimensions



Wiring diagram

