

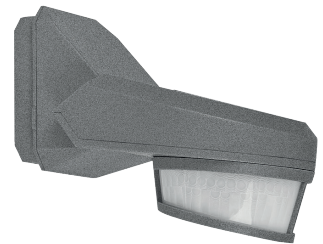
Swiss Garde outdoor motion detector 240°, 230 V, 16 m, alu

351-26561

4 year warranty

This 1-channel outdoor motion detector, which is not activated by pets, is perfectly suitable for every light switch around the house. The detection range is 16 metres. The motion sensor can be precisely aimed. The device has a built-in light sensor and switches the lighting on automatically or manually with an N.O. push button (to be ordered separately). After the pre-set time delay, the light is switched off automatically. This sensor can be configured both manually and by remote control.

- Animal detection can be switched on/off
- Low crossing detection
- Low consumption (0.25 W)
- Detection head adjustable horizontally and vertically
- Separate setting for the lux, the switch-off delay and the sensitivity
- Can be programmed manually or using the optional remote control
- High-performing detection with few inadvertent triggers



Motion detector for use in driveways, carports, gardens, etc.

- The lighting remains on while there is motion
- You can split the detection zone using the cover mask provided.
- The user remote control provided allows you to turn animal detection on and off and turn the lights on and off manually.
- The 300° model includes an angled mounting bracket.
- Potential-free contact

Technical data

Swiss Garde outdoor motion detector 240°, 230 V, 16 m, alu.

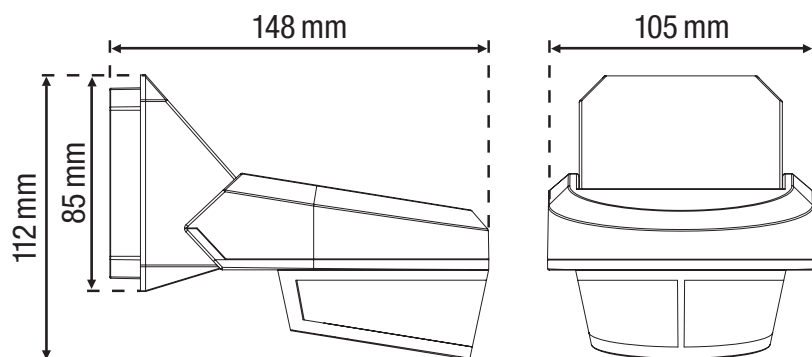
- Input voltage: 230 Vac \pm 10 %, 50 Hz
- Detector output: 230 V (ON/OFF)
- Number of channels: 1 channel
- Light intensity range: 5 lux – 2000 lux
- Switch-off delay: pulse, 10 s – 20 min
- Detection angle: 240 °
- Detection range (PIR): half circle, 16 m from a height of 3 m
- Ambient temperature: -20 – +50 °C
- Mounting method: surface mounting
- Mounting height: 2 – 5 m
- Relay contact: NO 8,7 A
- Maximum load incandescent and halogen lamps ($\cos = 1$): 2000 W
- Maximum load fluorescent lamps ($\cos \geq 0.5$): 1000 VA
- Maximum load low voltage halogen lamps: 1000 W
- Maximum load economy lamps (CFLi): 300 W
- Maximum load LED lamps 230 V: 300 W
- Dimensions (HxWxD): 112 x 105 x 148 mm
- Protection degree: IP54
- Protection class: Class II device

niko

- Marking: CE



Dimensions



Wiring diagram

