

Combination coax with RJ45 connection UTP Cat. 5E, flat model, incl. base 60 x 71 mm with claw fixing

170-65158

4 year warranty

Mechanism with RJ45 connection point UTP Cat. 5E and coaxial connection.

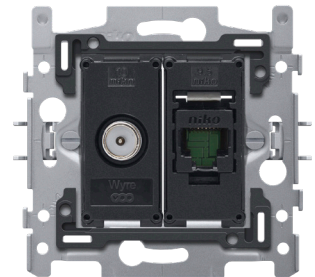
The RJ45 connection point UTP Cat. 5E is used to make a network connection for telephone, Ethernet, IP or internet applications.

All connection points of the mechanism are connected in a star configuration to the central connection cabinet using a cable of the same performance type.

The base has internal dimensions of 45 x 45 mm and external dimensions of 60 x 71 mm and is equipped with claw fixing.

A finishing set in the colour of your choice must be ordered separately.

This article is protected by at least one patent (application). For more info on patents, see www.niko.eu/innovation.



Niko quality:

- metal base is held firmly in place, even on uneven walls, doesn't break and is not subject to stress cracking (small ruptures)
- firm metal claws with a large engagement depth (31 mm) remain fixed when mounted and can be screwed tightly to ensure that the socket outlets can remain fixed in the wall for a longer time and to avoid the mechanisms should become warped

Technical data

Combination coax with RJ45 connection UTP Cat. 5E, flat model, incl. base 60 x 71 mm with claw fixing.

- Protection degree: IP41 for the combination of a mechanism, central plate and faceplate
- The combination of a mechanism, a central plate and a faceplate has an impact resistance of IK06
- Dimensions (HxWxD): 71 x 73 x 40.5 mm
- Certification marks: Telenet-Wyre & VOO
- Marking: CE

Universal base for 45 x 45 mm functions.

- Impact resistance: The combination of a mechanism, a central plate and a faceplate has an impact-resistance of IK06
- Flush-mounting frame
 - 1 mm-thick metal
 - galvanized on all sides after cutting, even on the cut edges
 - with 4 grooves with screw hole of 7 mm
 - with 4 screw holes (indicated by a screw symbol) with a diameter of 3 mm for mounting on panels
- Fixing method
 - simple mounting in a flush-mounting box with grip surfaces
 - with claws that rotate open using screws with a combination screwhead (Pz1 or slot 1 x 5 mm), for

niko

mounting in a flush-mounting box with grip surfaces

- engagement depth of claws: 31 mm
- claws can be pushed back into their original position
- claws can be easily pushed out using a screwdriver
- Centre-to-centre distance
 - Simple and quick assembly of one or more mechanisms by the indication (chalk line, laser, etc.) of the centre of the flush-mounting frame
 - vertical coupling centre-to-centre distance 60 mm by sliding several bases into each other, they lock themselves automatically
 - vertical coupling centre-to-centre distance 71 mm using pre-formed lips at the bottom, by folding the lips downwards over a length of 1 mm, the bases support each other and the centre-to-centre distance is guaranteed.
 - horizontal connection of multiple bases is quick and perfect thanks to the folded-up dovetails on the left and right sides
 - extra robustness due to the folded-up edges on the outside of the base and the continuation into the inside of the base
- End border: The flush-mounting frame is equipped, both on the top and the bottom, with a dark grey, plastic end border. This border is made of PC+ASA and is joined to the flush-mounting frame using a melting process. The corners of the two end borders are equipped with rectangular openings (7.9 x 1.5 mm) each containing a multi-positional snap hook. Thanks to the snap hooks, the 4 rectangular openings ensure that the faceplate can always be attached flat to the wall, even in cases of untidy plasterwork. This works in two directions: If the flush-mounting box sticks out of the plasterwork, the multi-positional snap hooks can compensate for a 1 to 1.2 mm margin; if the flush-mounting box is sunk too deeply in the plasterwork, the snap hooks can compensate for up to a 1.8 mm margin. The end borders also have 4 round openings that ensure the correct positioning of the faceplate in relation to the central plate.
- Ambient temperature: -5 – +40 °C
- Dimensions (HxWxD): 71 x 73 x 14 mm
- Marking: CE

Adapter 9.5, single, flat for RJ connectors 650-450xx

- Impact resistance: The combination of a mechanism, a central plate and a faceplate has an impact-resistance of IK06
- Marking: CE

Unshielded RJ45 connector UTP Cat. 5E, for bandwidths up to 100MHz

- Protection degree: IP41 for the combination of a mechanism, central plate and faceplate
- Impact resistance: The combination of a mechanism, a central plate and a faceplate has an impact-resistance of IK06
- Marking: CE



Dimensions

