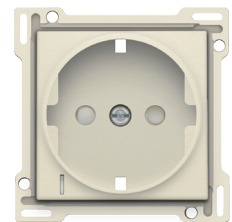


Finishing set for socket outlet with side earthing, shutters and voltage indication module, cream

100-66908

4 year warranty

The central plate is fixed to a flush-mounting socket outlet using a screw with a combination screwhead (Pz1 slot 1 x 5.5 mm). This central plate is surrounded with a flat edge that is equipped at all 4 corners with a rectangular opening, each containing a multi-positional snap hook. The construction of the central plate ensures that the faceplate can always be attached flat to the wall, even in cases of untidy plasterwork. Finishing colour: cream.



Technical data

Finishing set for socket outlet with side earthing, shutters and voltage indication module, cream. This central plate is surrounded with a flat edge that is equipped at all 4 corners with a rectangular opening, each containing a multi-positional snap hook. The construction of the central plate ensures that the faceplate can always be attached flat to the wall, even in cases of untidy plasterwork. This works in two directions: If the flush-mounting box sticks out of the plasterwork, the multi-positional snap hooks can compensate for a 1 to 1.2 mm margin; if the flush-mounting box is sunk too deeply in the plasterwork, the snap hooks can compensate for up to a 1.8 mm margin. The flat edge around the central plate also has 4 round openings that ensure the correct positioning of the faceplate in relation to the central plate. After mounting all components (faceplate, finishing set and switch), no metal parts are visible thanks to the flat edge of the central plate.

- Material central plate: The central plate is made of rigid PC and ASA. The base material is mass-dyed.
 - Colour: cream (mass-dyed, approximately NCS S 1005 - Y10R, RAL 1013)
 - Lens: The central plate is provided with an upstanding, rectangular, transparent lens (1 x 5 mm) at the bottom left for a flush-mounting socket outlet with voltage indication module.
 - Dismantling: To dismount simply unscrew the central plate.
 - Shutters: Equipped with shutters. This means that contact is made after simultaneous introduction of the pins of a plug but prevents contact from being made if only 1 pin is introduced or if the two pins are not introduced simultaneously.
 - Impact resistance: The combination of a mechanism, a central plate and a faceplate has an impact resistance of IK06
 - Fire safety
 - the plastic parts of the central plate are self-extinguishing (comply with a filament test of 650 °C)
 - the plastic parts of the central plate are halogen-free
 - Dimensions of finishing with flat edge: 56 x 56 mm (HxW)
- Dimensions of visible area of finishing: 45 x 45 mm (HxW)
- Dimensions (HxWxD): 55.8 x 55.8 x 28 mm
 - Marking: CE

