







Niko Rocker  
Niko Toggle



## Design and innovation since 1919

Niko was founded in 1919 by two brothers, Alfons and Werner De Backer. In their workshops in Sint-Niko-laas, they designed and manufactured switches and socket outlets that quickly won over the Belgian market. In 1960, Niko made the strategic decision to focus on design and started its journey abroad with the inter70.

A family-owned business, Niko develops and manufactures electr(on)ic solutions to enhance buildings to better suit the needs of the people who live and work in them. Niko is dedicated to providing well-thought-out design, innovative technology and an environmentally friendly approach. To this end, Niko invests heavily in research and development, and high-quality production.

Over the years, Niko has won numerous international design awards, like Red Dot Awards, A' Design Awards, iF Design awards and the prestigious Belgian Henry Van de Velde Award.



## Belgian flair and craftsmanship

A determined thoughtfulness has given the Belgian design scene a reputable international presence, established by many high-profile Belgian designers and architects. This thoughtfulness has become the cornerstone for the in-house design team of Niko, bringing Belgian flair to its designs with subtle, but characterising details.



The close collaboration of the in-house design team with our craftsmen creates a dynamic energy that makes the details of the Niko design come to life. These strongly defined, yet subdued designs make the portfolio of Niko stand out in any modern, minimalistic interior. Made in Belgium, Niko products are known for their reliable quality and design finish.

1928



*In 1928 Niko produces its first Bakelite® wall switch, the inspiration for the Niko Toggle.*

1958



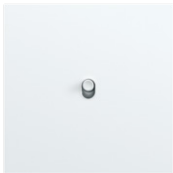
*With all eyes on Belgium for the Brussels World's Fair, Niko launches the rocker switch in 1958. Then a modern sign for design, now the inspiration for the Niko Rocker.*

# Exquisite craftsmanship

With more than 100 years of expertise and experience, Niko has created two new elegant premium switches: Niko Rocker and Niko Toggle. Their thoughtful design and fine-quality finish raise the interactive and tactile experience to new heights.

2024

The Niko Toggle references one of Niko’s original Bakelite® toggle switches, launched in 1928, and gives it a contemporary twist. Niko Rocker, on the other hand, pays homage to an original Niko design from 1958, the year in which Expo ‘58 took place in Brussels, a symbol for economic prosperity and progress. Handcrafted in Belgium and made using today’s technology and materials, both celebrate authentic, vintage design.



*Early 2024 Niko launches two premium switches, Niko Rocker and Niko Toggle, inspired by Niko's rich design history.*



*Later in 2024 Niko launches a socket outlet for Niko Rocker and Niko Toggle.*

## Intelligent design



### Niko Rocker

The sturdy metal push experience of the robust Niko Rocker defines its rewarding tactility. The long shape, pearl texture and subtle edge details of the rocker bar balance perfectly in the monolithic faceplate, surrounded by a neatly chamfered edge.



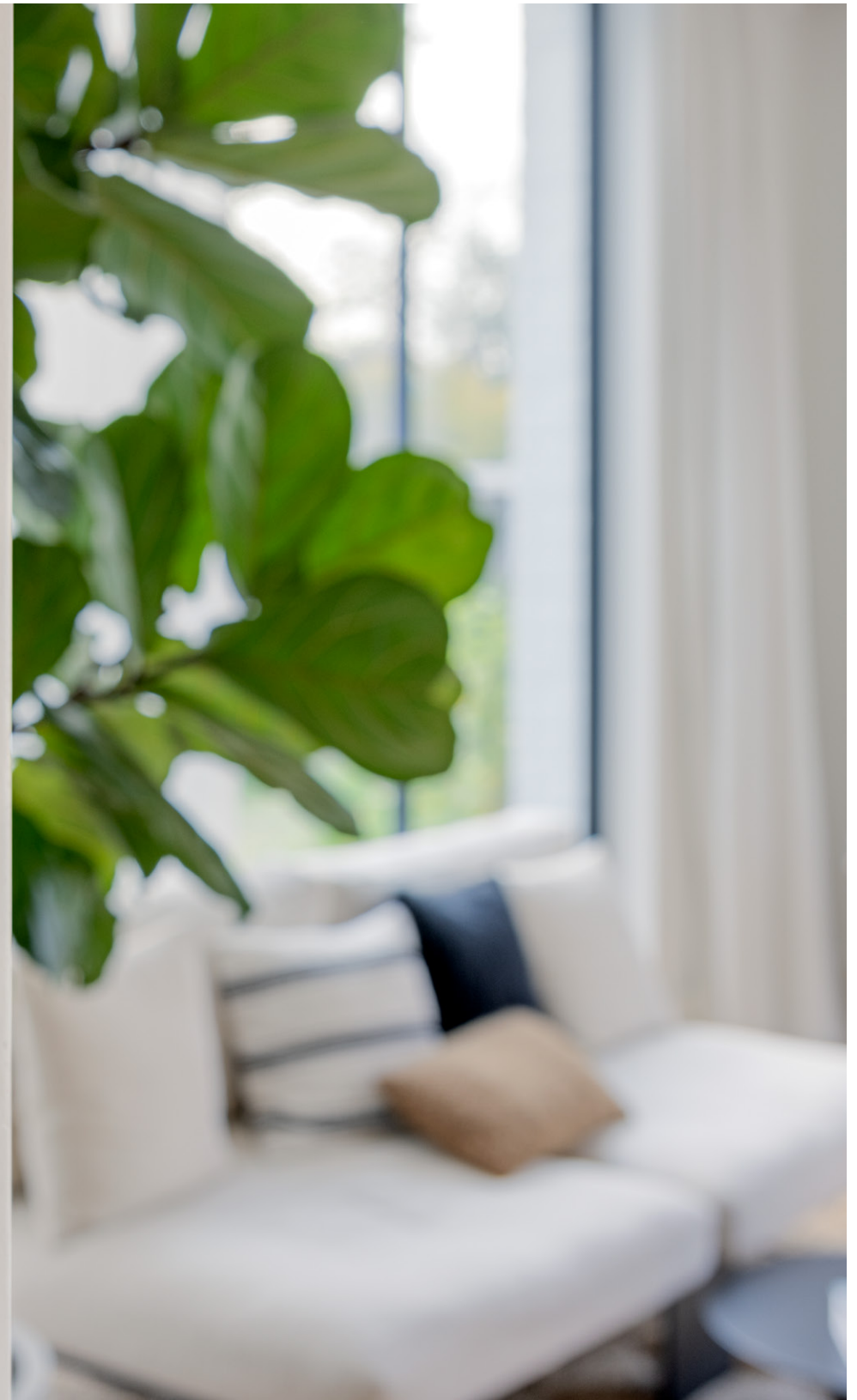
### Niko Toggle

The subtle notch at the top of the refined toggle lever is the signature detail of the Niko Toggle. The soft, etched texture and solid form of the toggle bar make it pleasant to touch and create a satisfying push experience.



## Hidden until lit

Both the Niko Rocker and Niko Toggle have an optional hidden-until-lit LED, that functions as a status feedback. Indicating that the switch is on or off, a soft warm glow surrounds the toggle or elegantly fades towards the top of the rocker. A well-considered feature that adds to the overall design experience.







## High-quality mechanism

Both the Niko Rocker and Niko Toggle share a high-quality core that has been specifically developed for these two new switches. It is built upon Niko's proven switch technology, but varies slightly, as the mechanism for these products is moved 8 mm further back in relation to the metal frame.

As these new mechanisms are built upon the highly reliable Niko Pure, Niko Intense and Niko Original mechanisms, you can be confident about their quality and longevity. Not only has this system been tested and re-tested against the ruling norms and regulations, it is also used in hundreds of thousands of homes across Europe many times a day.

**Niko Rocker**  
alu black brushed





**Niko Toggle**  
alu black brushed



**Niko Toggle**  
alu gold brushed

**Niko Toggle**  
alu gold brushed



**Niko Rocker**  
alu grey brushed





**Niko Rocker**  
alu grey brushed

## **Niko Toggle**

steel champagne coated

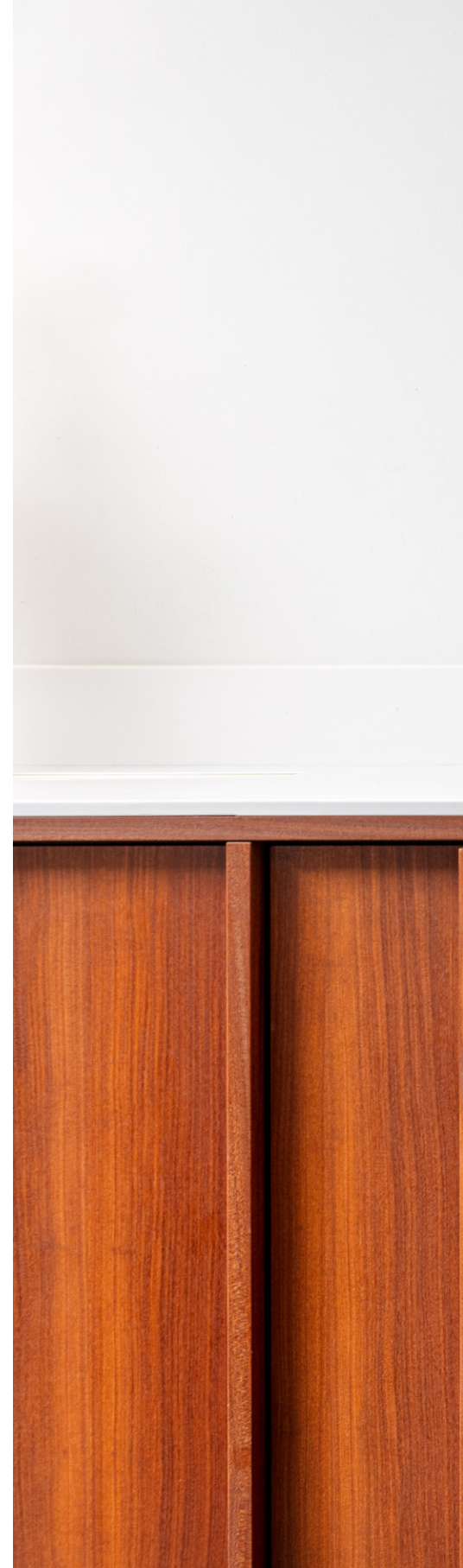


**Niko Rocker**  
steel champagne coated





**Niko Rocker**  
steel white coated





**Niko Rocker**  
steel white coated



**Niko Rocker**  
alu blue grey brushed

### **Niko Rocker**

alu blue grey brushed





## Tactile and functional

The Niko Rocker and Niko Toggle switches, with their satisfyingly solid feel, are both stylish and beautiful to touch. Designed and made for today's modern home, they can be used for various functions.

Naturally, they offer the usual on/off and motor control features, as well as dimming when combined with a module in the electrical cabinet. What's more, they can be connected to a Niko Home Control system to activate lights, turn on the ventilation or create the perfect atmosphere in an instant.



# Materials and colours



**steel white coated**  
154-xxxxx



**steel champagne coated**  
166-xxxxx



**alu gold brushed**  
227-xxxxx



**alu grey brushed**  
155-xxxxx



**alu blue grey brushed**  
226-xxxxx



**alu black brushed**  
224-xxxxx



# Faceplates and finishing sets

Niko Rocker and Niko Toggle faceplates are available for single and double switch functions and offered in single or twofold versions. For a complete overview of all faceplates and functions, visit [niko.eu/rockertoggle](https://niko.eu/rockertoggle)

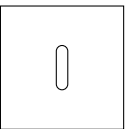
xxx-56001



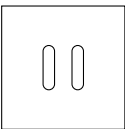
xxx-56002



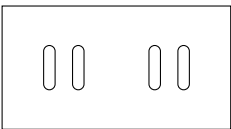
xxx-56101



xxx-56102

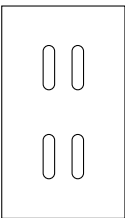


xxx-56802



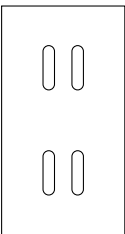
centre-to-centre  
distance 71 mm

xxx-56252



centre-to-centre  
distance 60 mm

xxx-56852



centre-to-centre  
distance 71 mm

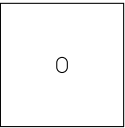
xxx-57001



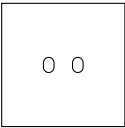
xxx-57002



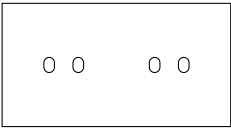
xxx-57101



xxx-57102

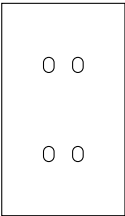


xxx-57802



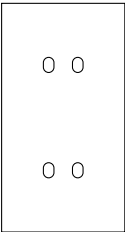
centre-to-centre  
distance 71 mm

xxx-57252



centre-to-centre  
distance 60 mm

xxx-57852



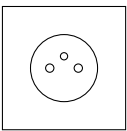
centre-to-centre  
distance 71 mm

# Socket outlet for Niko Rocker and Niko Toggle

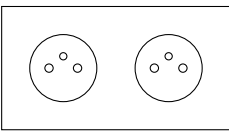
Adding sockets in the same high-quality finish as the Niko Rocker and Niko Toggle switches, completes the premium range. These sockets come in single, twofold and threefold versions, available both horizontally and vertically.

To combine a Niko Rocker or a Niko Toggle with these sockets, Niko recommends a centre-to-centre distance of approximately 103 mm for flush-mounting boxes, resulting in a sleek spacing of around 20 mm between faceplates.

xxx-74101

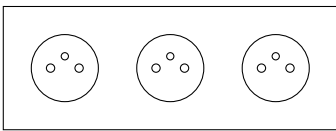


xxx-74801



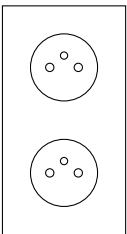
centre-to-centre  
distance 71 mm

xxx-74701



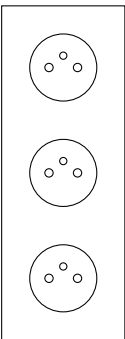
centre-to-centre  
distance 71 mm

xxx-74201

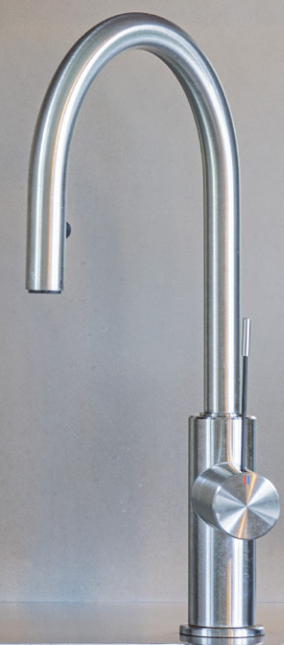
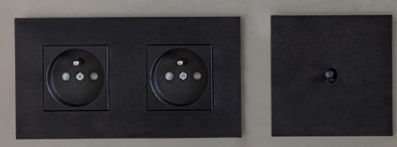


centre-to-centre  
distance 60 mm

xxx-74301



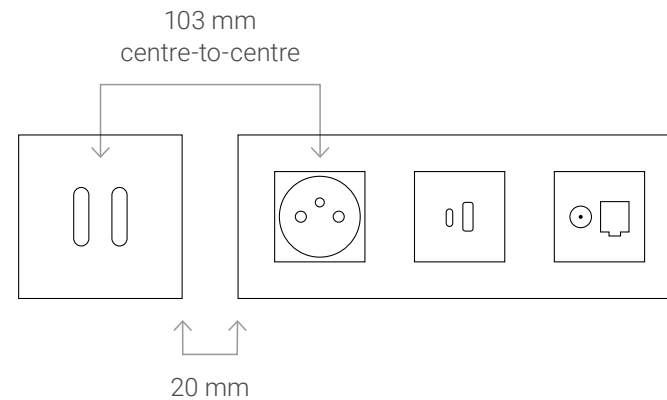
centre-to-centre  
distance 60 mm

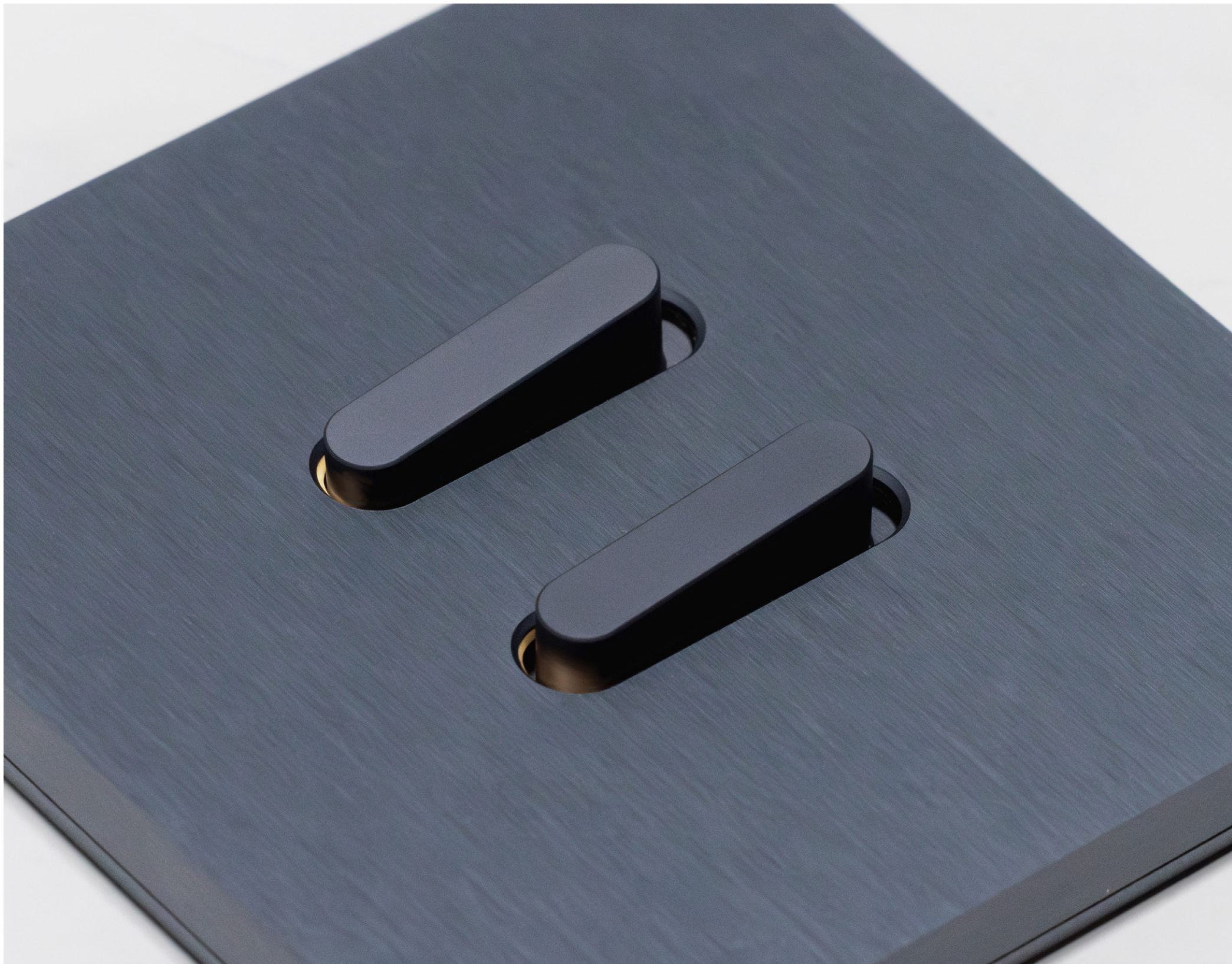


## Combine with Niko Pure sockets and data functions

Niko Rocker and Niko Toggle are crafted from the same premium brushed aluminum and coated steel featured in our Niko Pure range. This means you can seamlessly combine Niko Rocker and Niko Toggle switches with Niko Pure sockets, data connections, USB chargers, and more; creating a cohesive fusion of functionality and style.

For optimal integration, Niko recommends a centre-to-centre distance of approximately 103 mm for flush-mounting boxes, resulting in a sleek spacing of approximately 20 mm between faceplates.





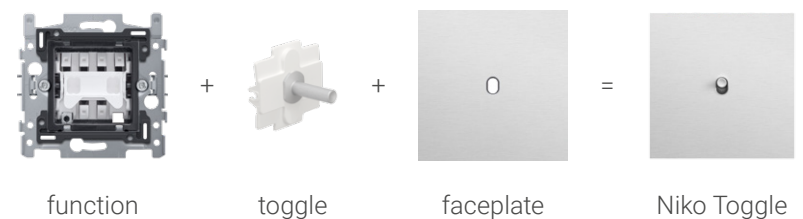
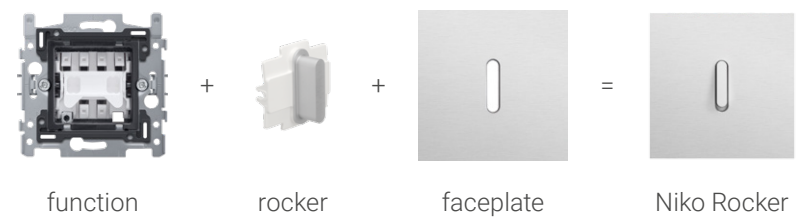


## Various functions

The Niko Rocker and Niko Toggle switches feature a newly developed mechanism (171-xxxxx) that was fully tailored to offer an innovative switch interaction. The mechanisms, with plug-in terminals, are available for several functions: switch, two-pole switch, double-two-way switch, etc. This extensive offer of switches makes both the Niko Rocker and Niko Toggle the perfect choice for a 230 V installation.

They also integrate smoothly in a Niko Home Control installation on bus wiring. When combined with the newly developed push-button interface with feedback LEDs you can upgrade your entire Niko Home Control bus experience. Now that's beautifully smart!

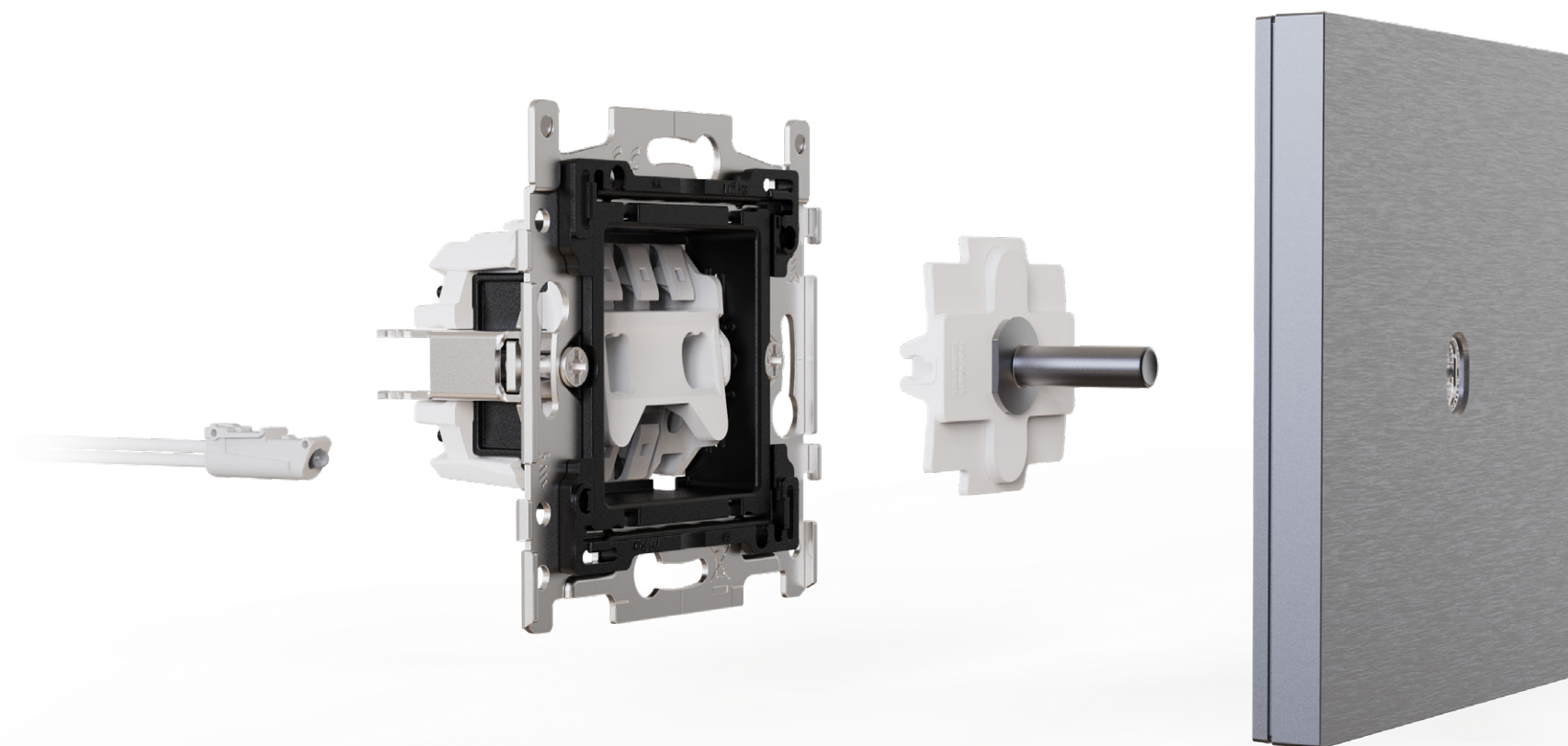
Moreover, you can choose from various push-button mechanisms, making the Niko Rocker and Niko Toggle switches the perfect addition for any installation using 24 V or 230 V switches.





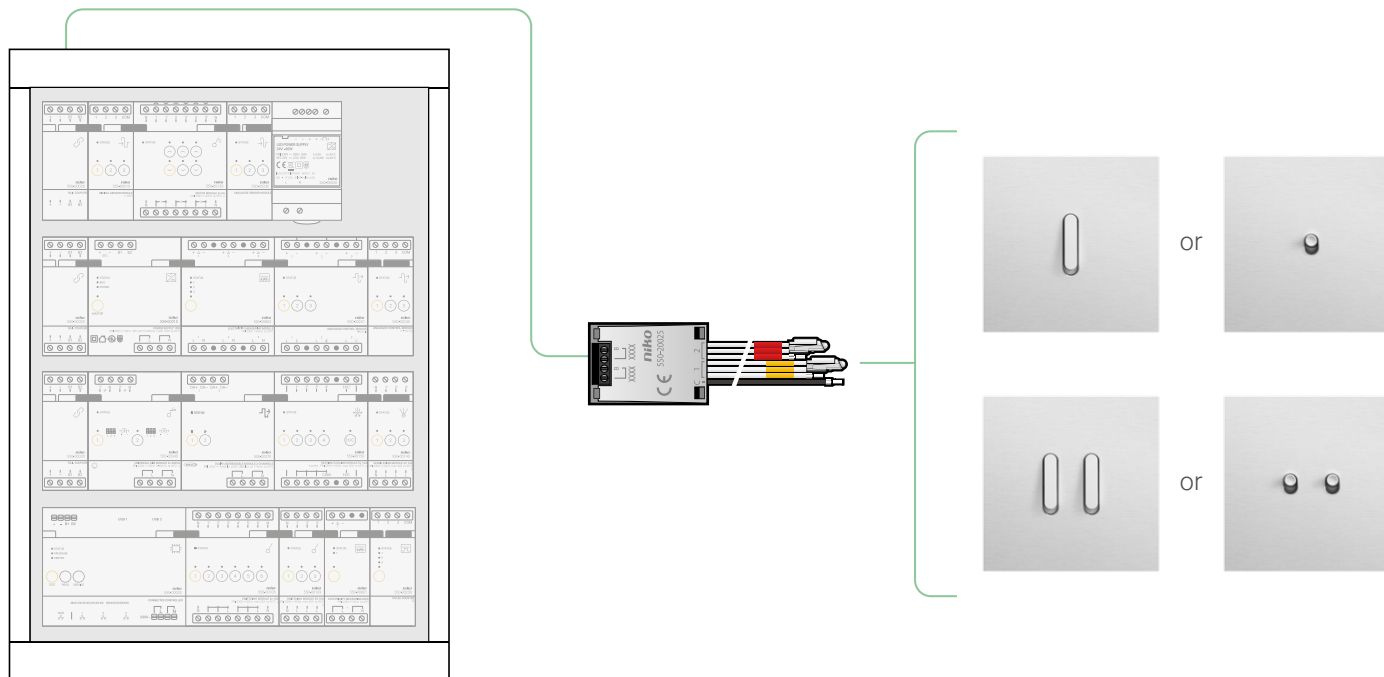
# Various functions

Claws	Screws	
171-01605	171-01615	Base for a two-way switch, 10 AX/250 Vac
171-02605	171-02615	Base for a double two-way switch, 10 AX/250 Vac
171-01505	171-01515	Base for a two-circuit switch, 10 AX/250 Vac
171-01705	171-01715	Base for an intermediate switch, 10 AX/250 Vac
171-01205	171-01215	Base for a two-pole switch, 10 AX/250 Vac
171-03005	171-03015	Base for N.O. or N.C. push button with 4 connection terminals, 10 A/250 Vac
171-05005	171-05015	Base for a double N.O. or N.C. push button, 10 A/250 Vac
171-05605	171-05615	Base for a double switch: two-way switch and N.O. or N.C. push button, 10 AX/250 Vac
171-05905	171-05915	Base for roll-down shutter switch, electrically separated, 10 AX/250 Vac
Accessories		
171-37024	Lighting unit with wires, 24 V, with warm white high-intensity LED for switches and push buttons	
171-37923	Lighting unit with wires, 230 V, with warm white high-intensity LED for switches and push buttons	
550-20025	Niko Home Control push-button interface with feedback LED, two inputs	



# Niko Home Control

Niko Rocker and Niko Toggle can be integrated in a Niko Home Control installation on bus wiring. As shown in the scheme below, you can use the newly developed push-button interface with feedback LED to control your smart installation with a Niko Rocker or Niko Toggle.





Niko designs electr(on)ic solutions to enhance buildings to better suit the needs of the people who live and work in them. By using less energy, by improving light comfort and safety and by making sure all applications work together seamlessly. Buildings with Niko are more efficient, are controllable from a distance and interact within bigger ecosystems. Niko is a Belgian family business from Sint-Niklaas with 700 employees and 10 European branches.

At Niko, there is one question that keeps us busy every day: "How can we enhance buildings to better suit your needs?"



Niko nv  
Industriepark West 40  
B-9100 Sint-Niklaas  
Belgium  
[sales.be@niko.eu](mailto:sales.be@niko.eu)  
+32 3 778 90 00  
[www.niko.eu](http://www.niko.eu)



